

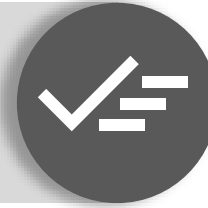
E.I.I SECTEUR ANTERIEUR LES CLEFS DU SUCCÈS

(Dr. Laurent Bluche)

ADF 2022



E.I.I LES AVANTAGES



GAIN DE TEMPS

MORBIDITÉ ↓

**MAINTIEN DES
TISSUS DURS
ET
MOUS**

LES AXES PRINCIPAUS D'INTÉRÊTS



TISSUS MOUS

TISSUS DURS

Harmonie de la
prothèse
Axe et angulation

TISSUS
MOUS

TISSUS DURS

Harmonie
de la
prothèse
Axe et
angulation



Pérennité

Esthétique

Stabilité primaire

Intégration

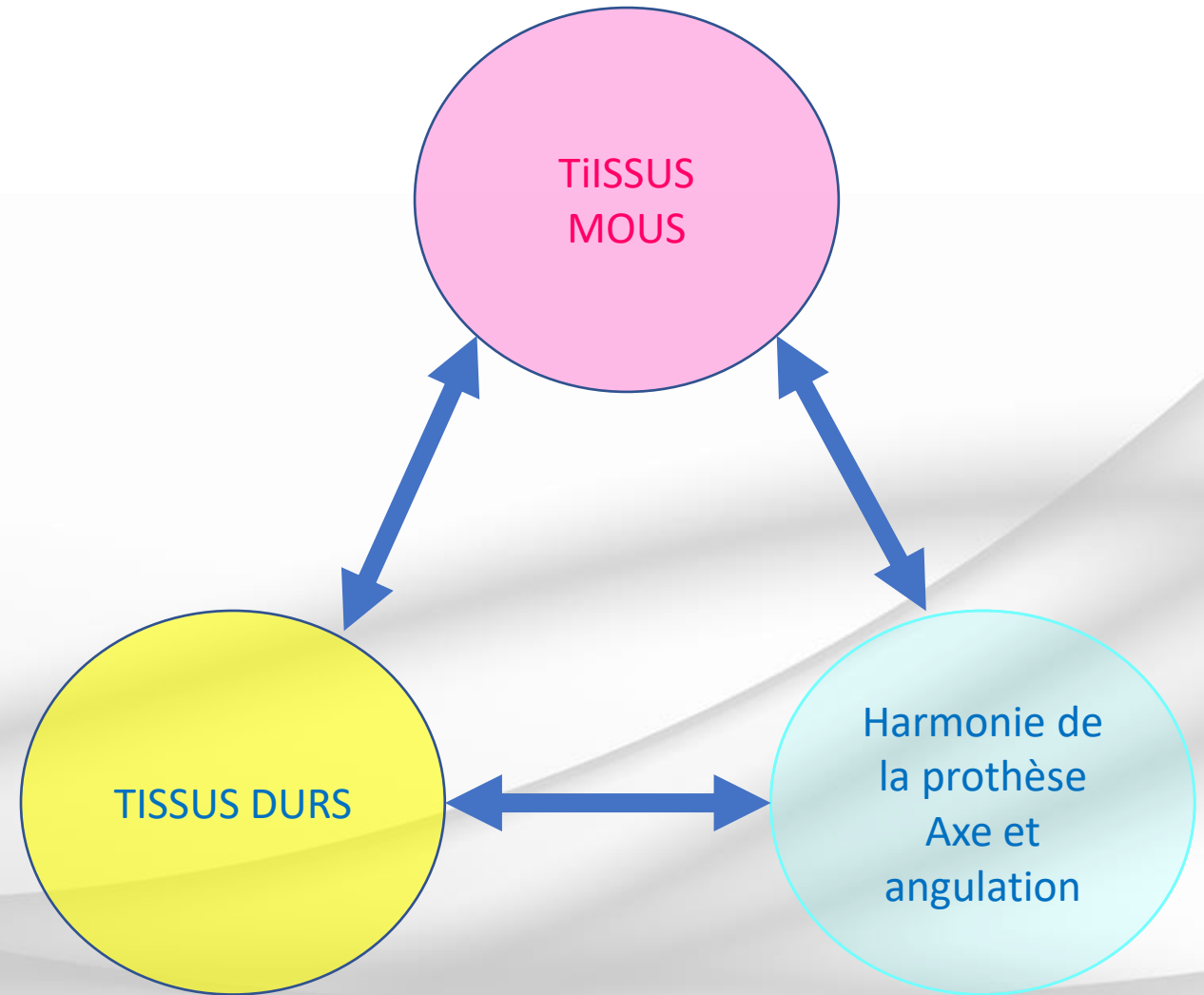
Soutien du rose

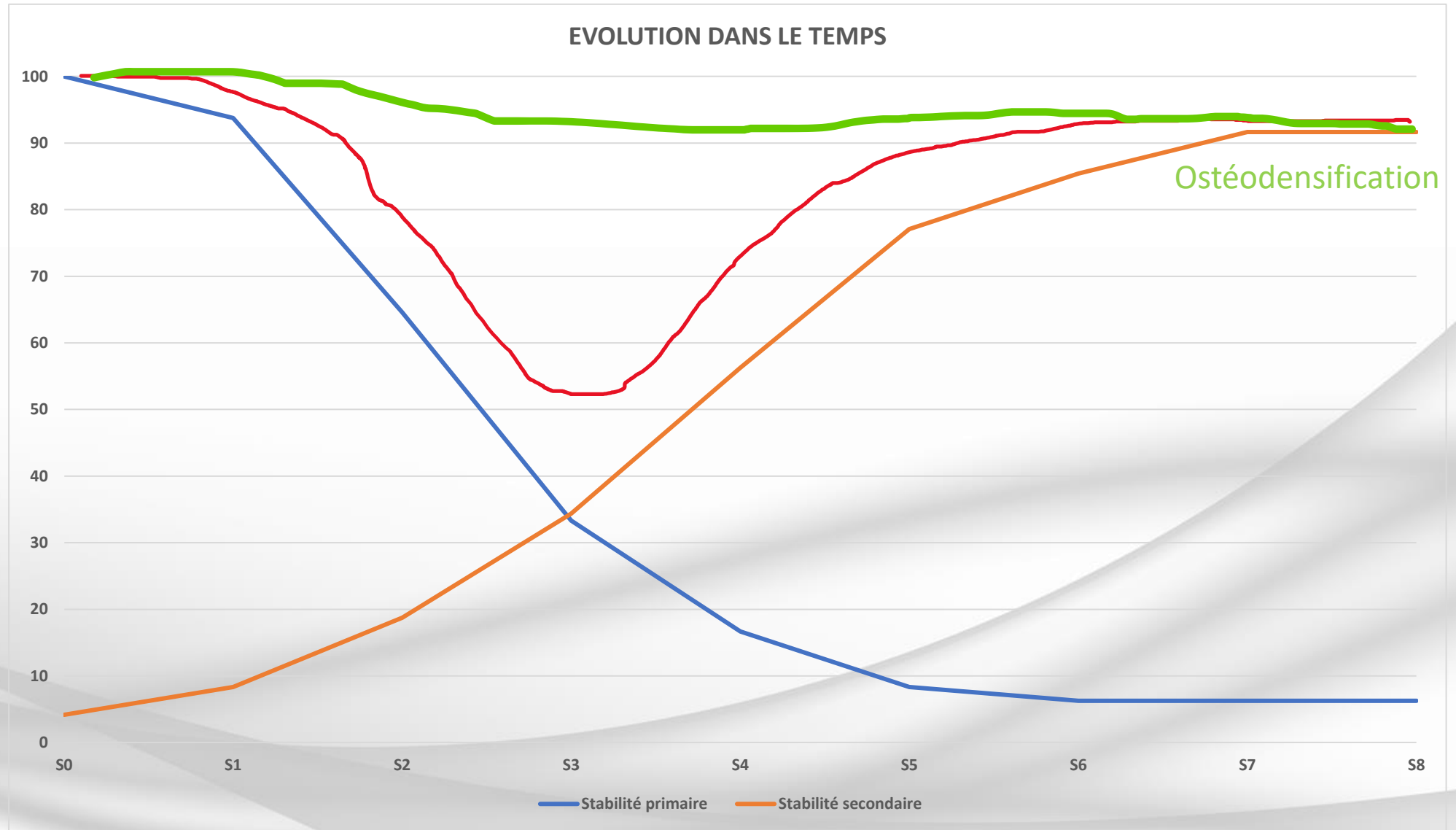
Scellé

Vissé

Elts indispensables :

- Plan de tt prothétique
- Stabilité primaire
- Volume osseux
- Volume gingival

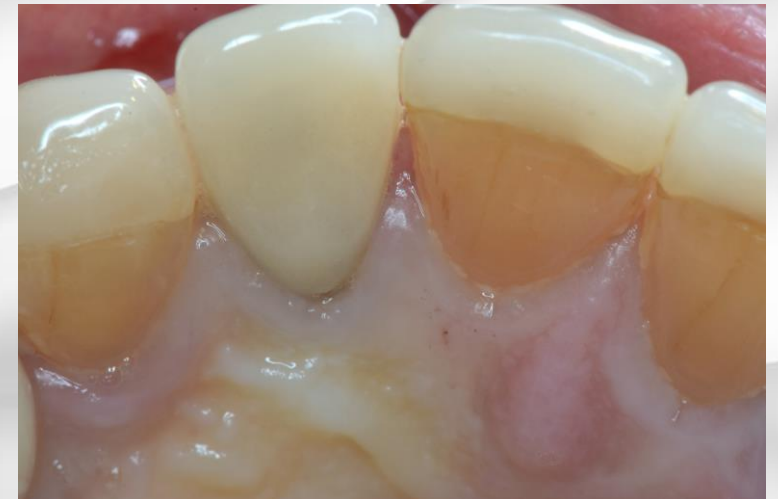
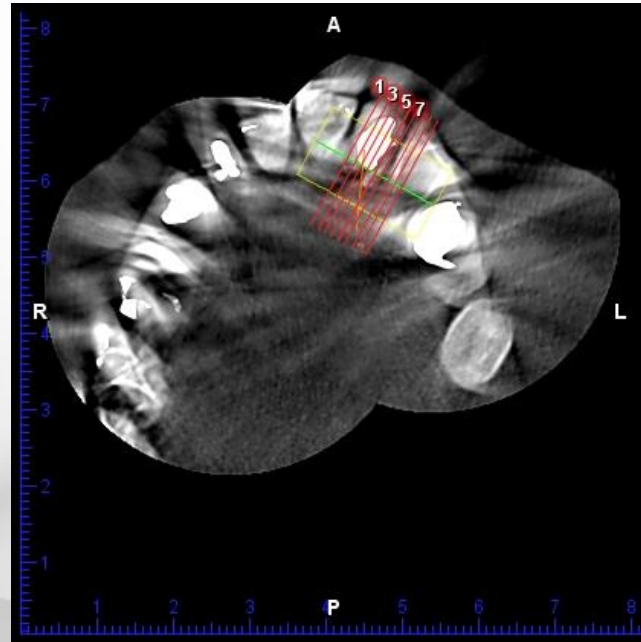
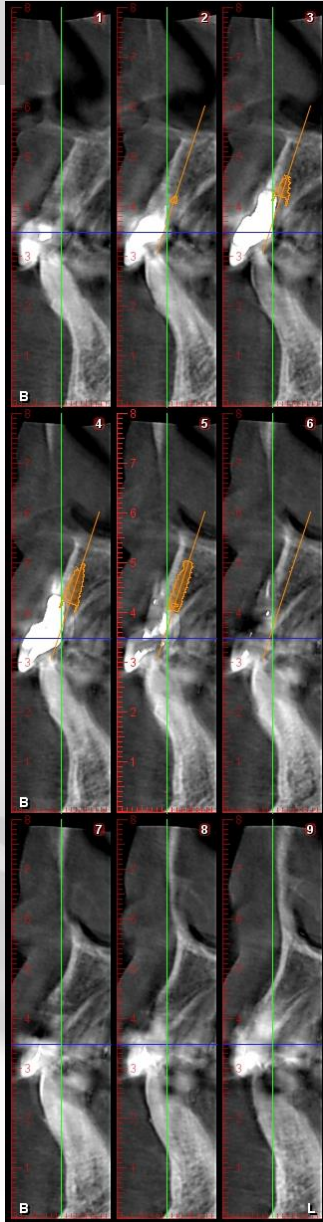
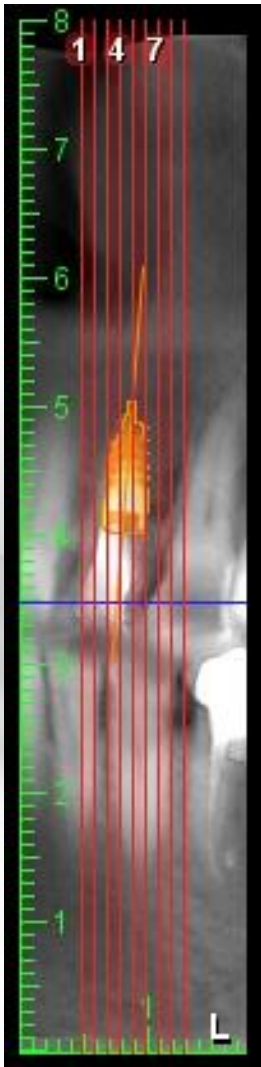




L'ostéodensification augmente et maintient la stabilité primaire

CAS 4

E.I.I





Stabilité primaire osteodensification - Maintien osseux expansion de la crête

Implant dans l'os natif au maximum - Greffe pour stabiliser l'os natif

CAS 4

TISSUS
DURS

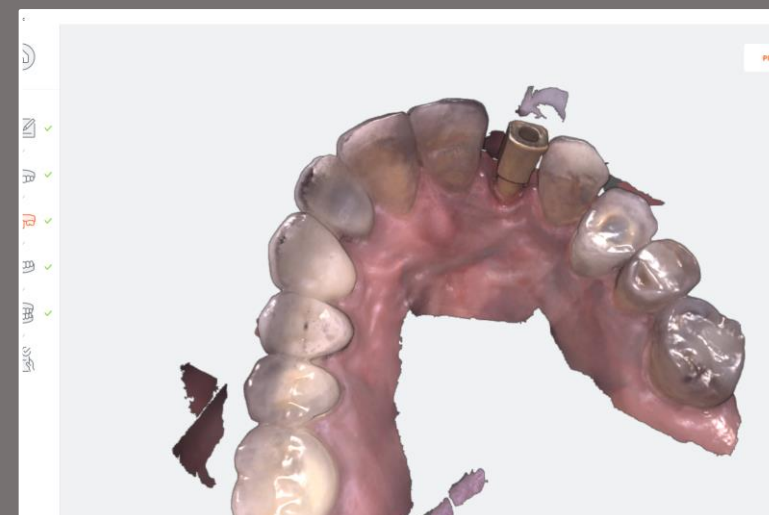


Stabilité primaire opposable. Sup a 70 ISO Mise en situation prothétique provisoire

TISSUS MOUS







Harmonie de la prothèse – Axe et angulation



E-MAX



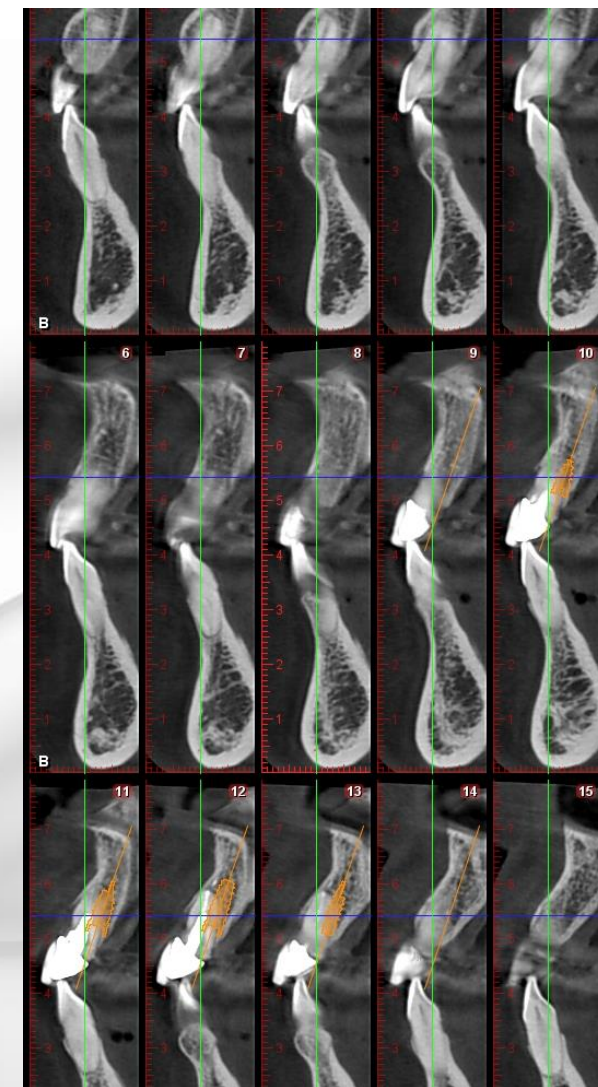
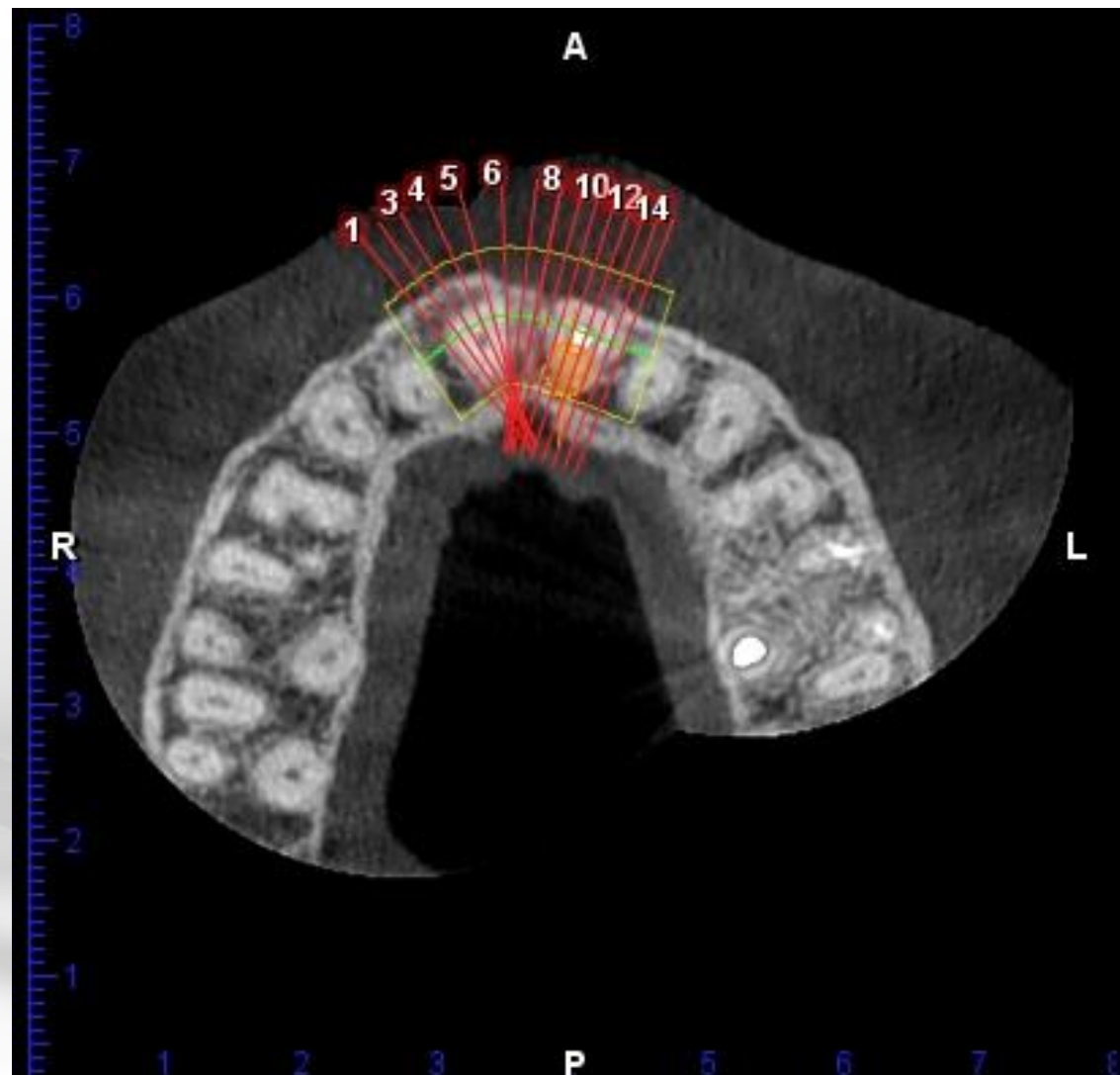
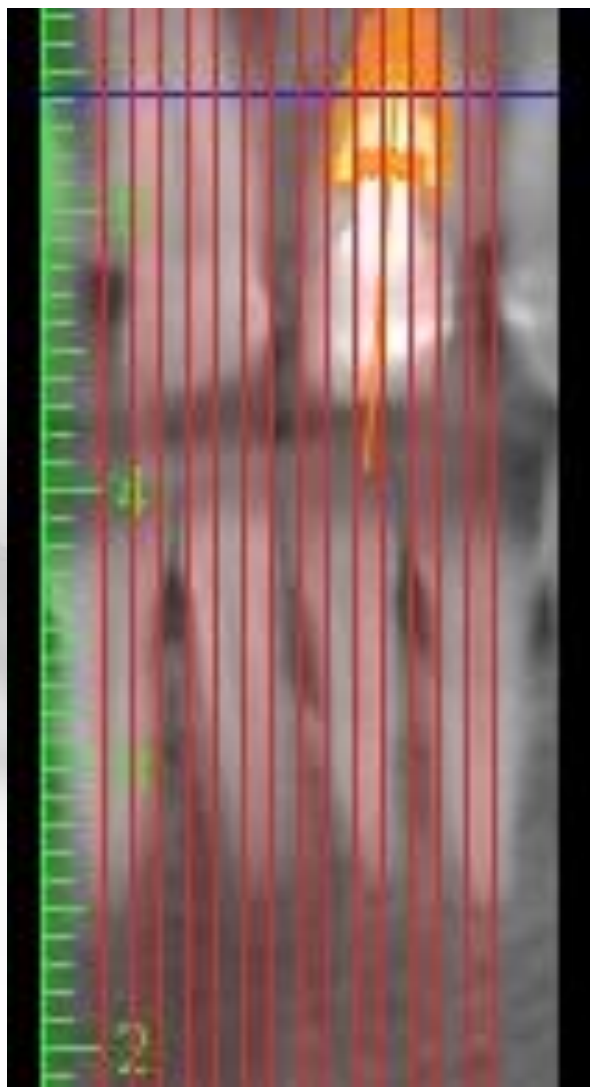
Trans-gingival polissage





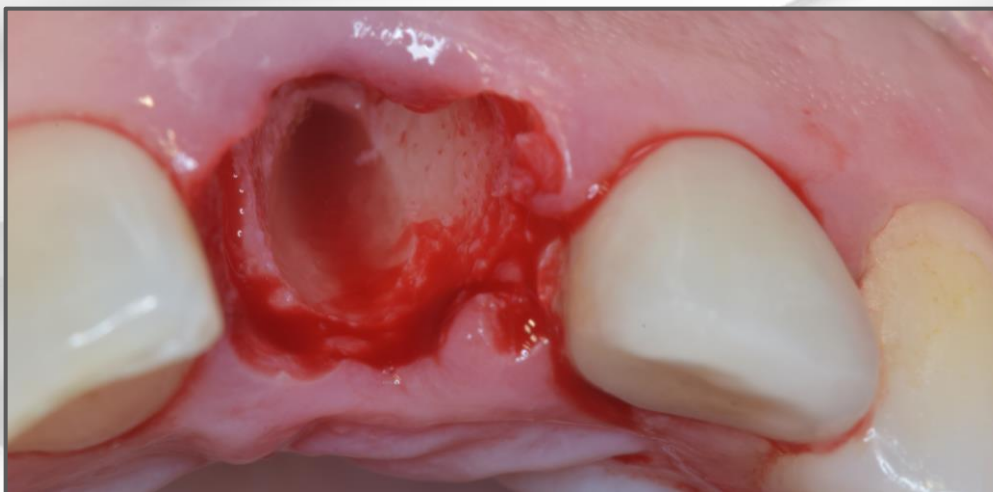
CAS 9

CBCT



CAS 9

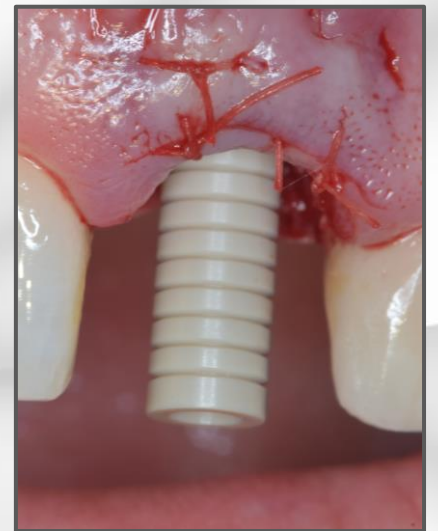
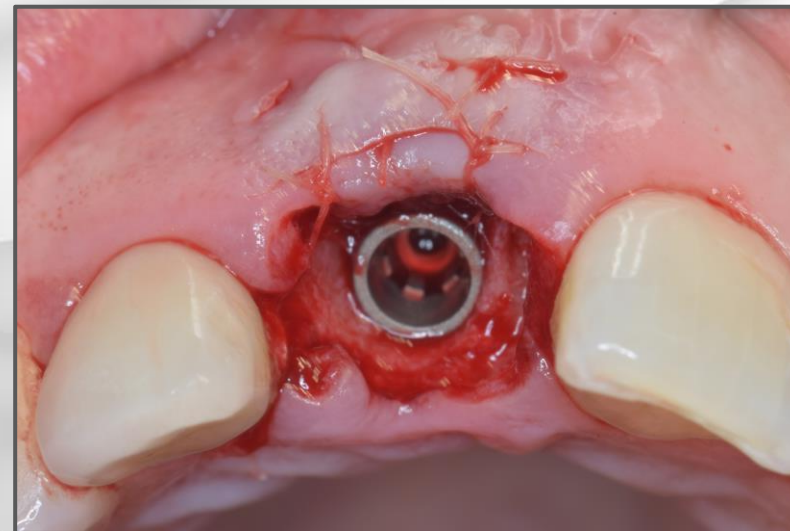
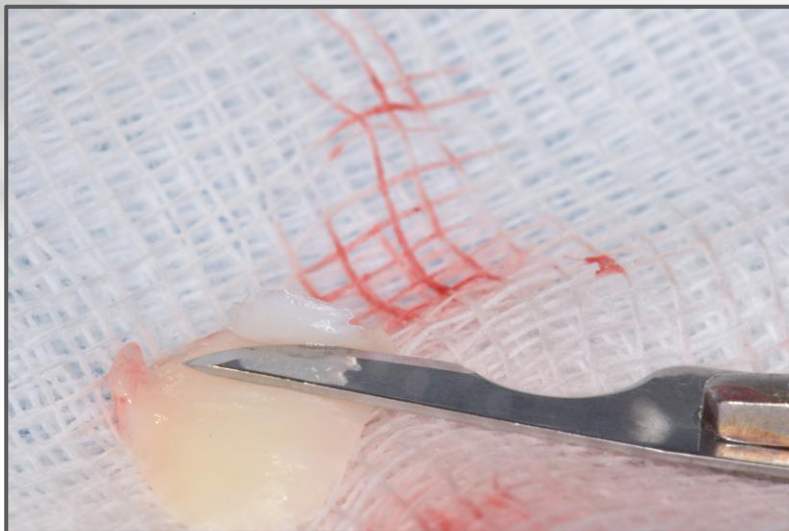
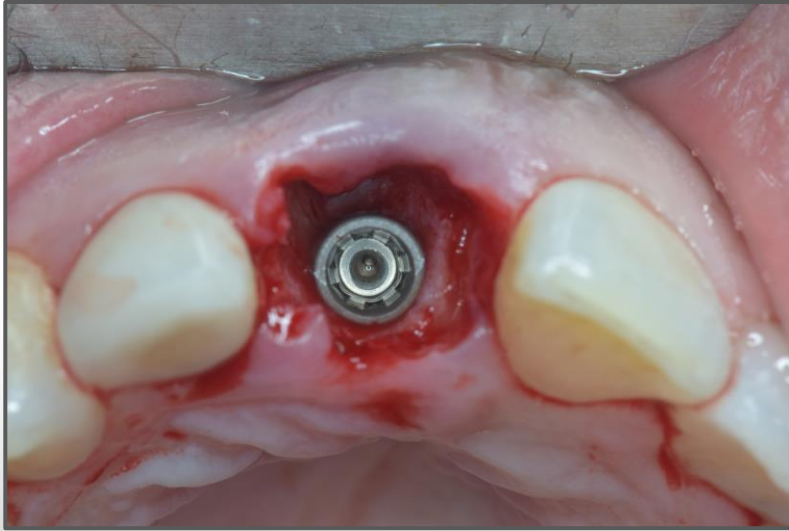
E.I.I



CAS 9

E.I.I

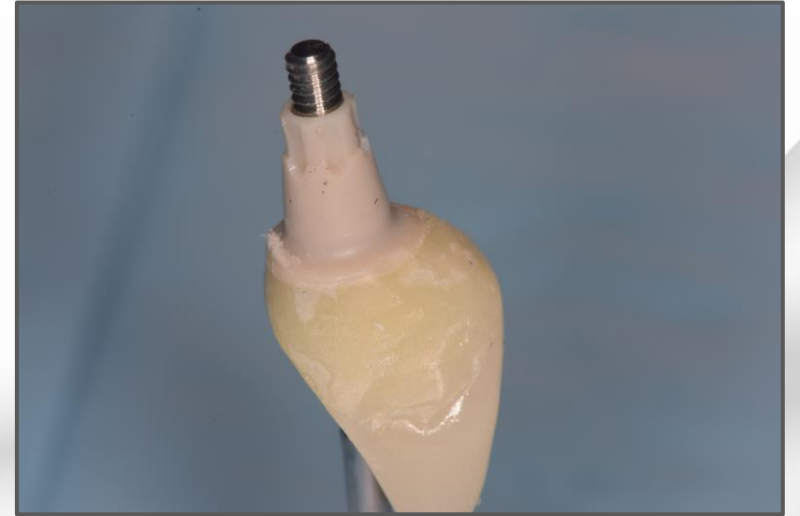
gmi
france



CAS 9

E.I.I

gmi
france



CAS 9

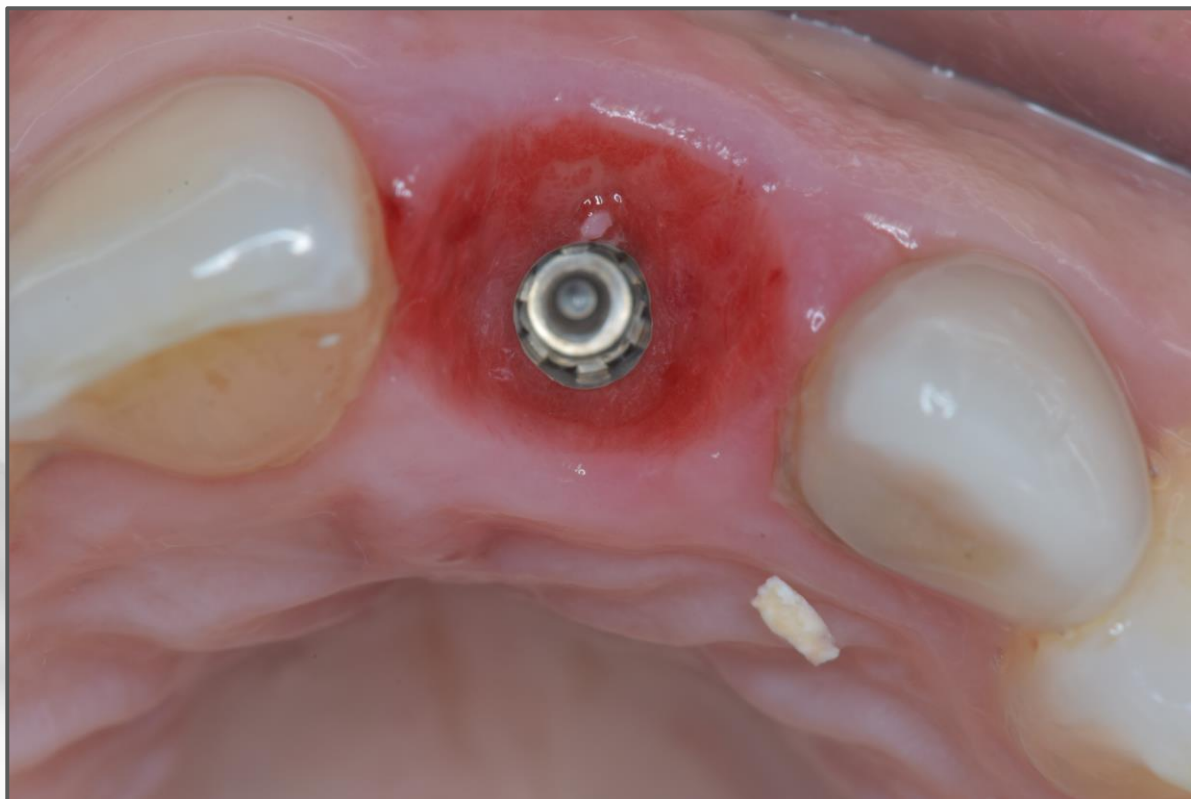
E.I.I



+ 2 mois

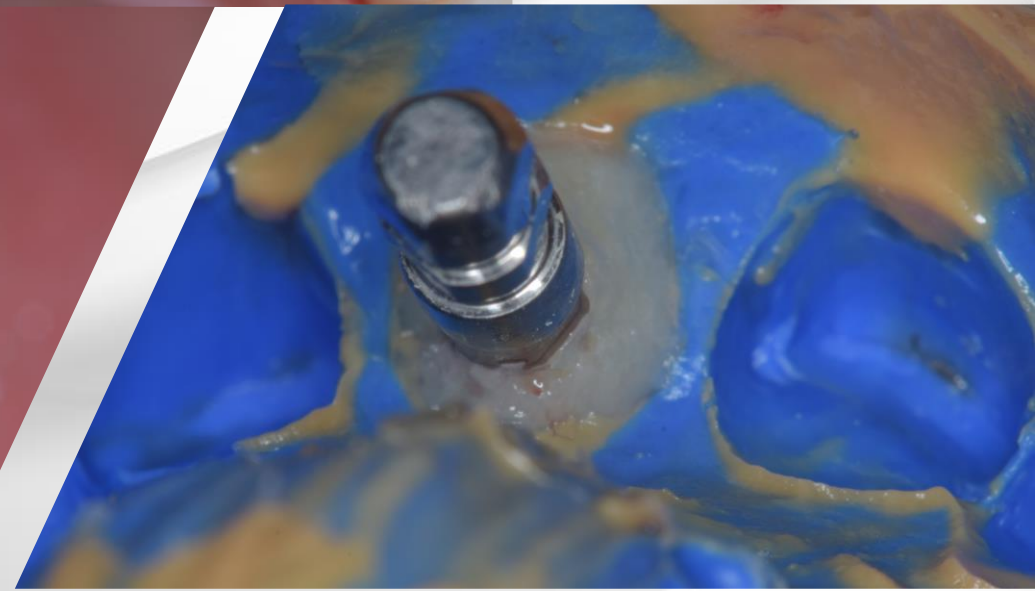
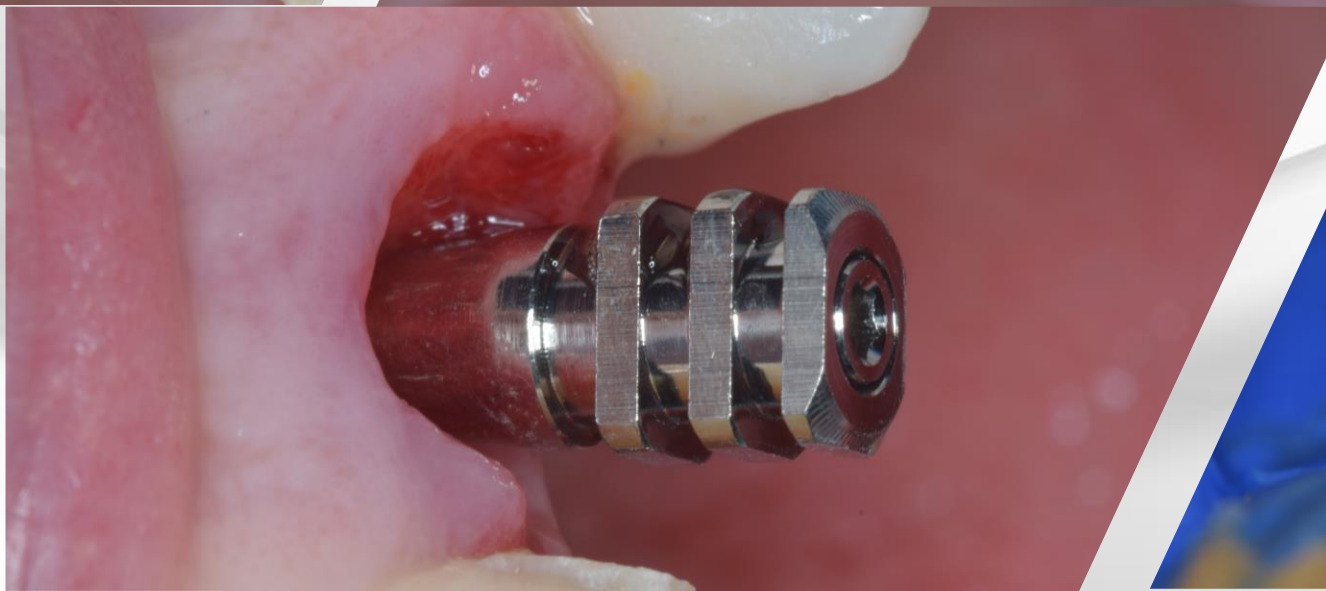
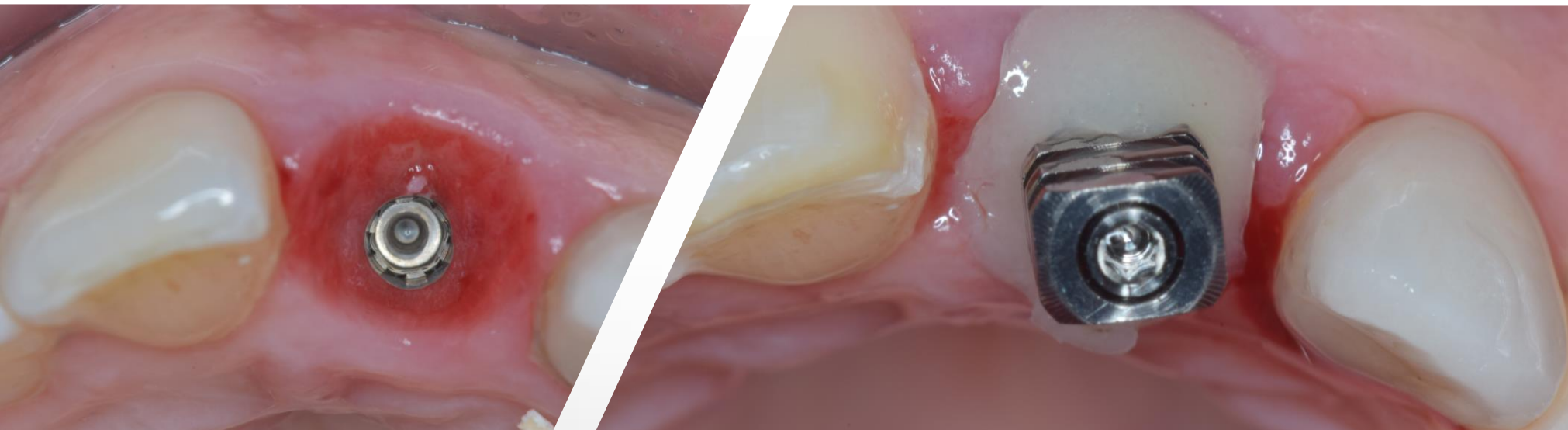
CAS 9

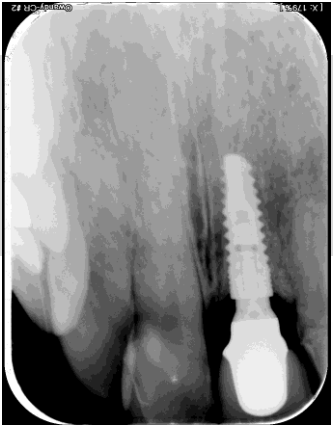
E.I.I



CAS 9

E.I.I





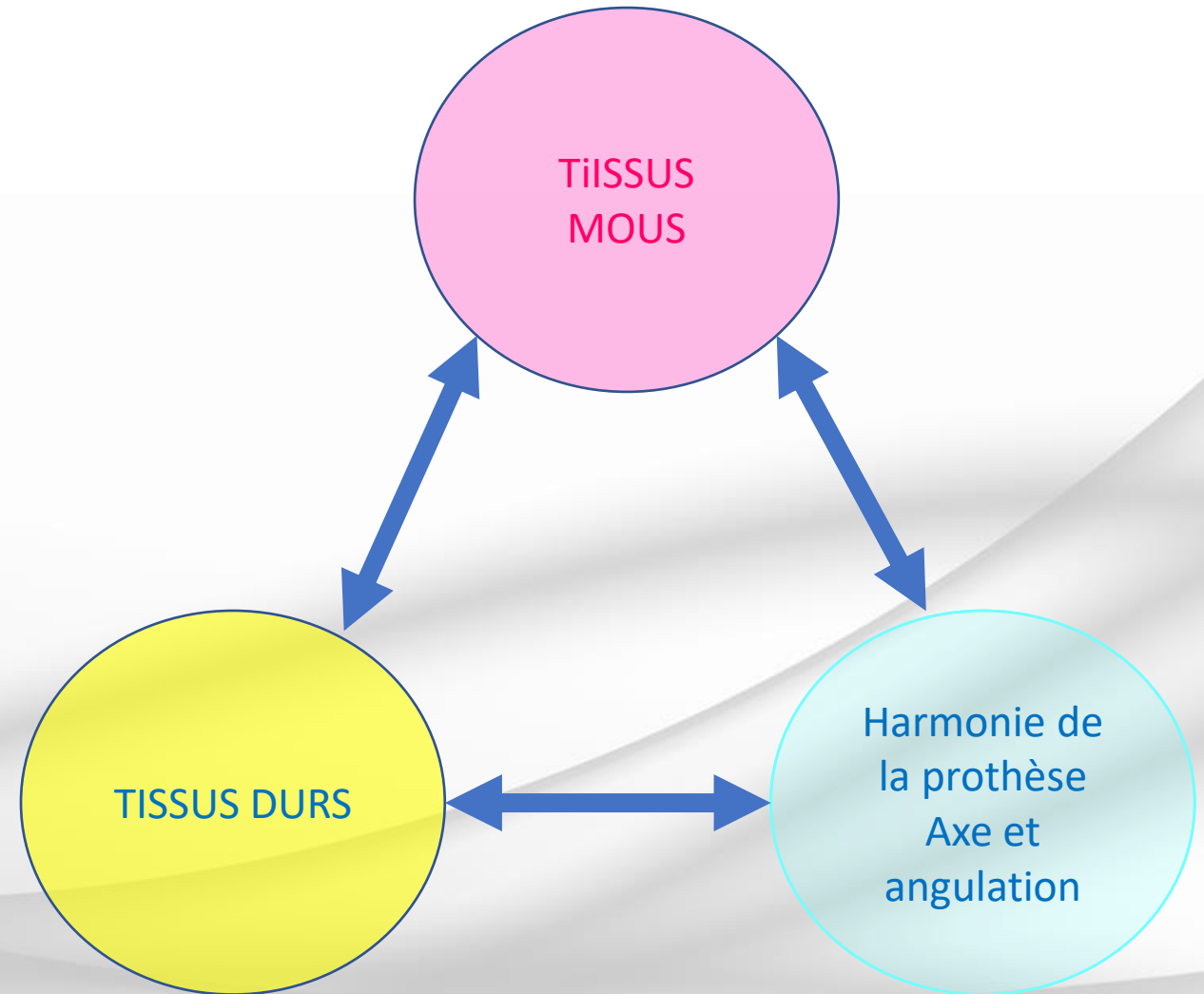
CAS 9

E.I.I

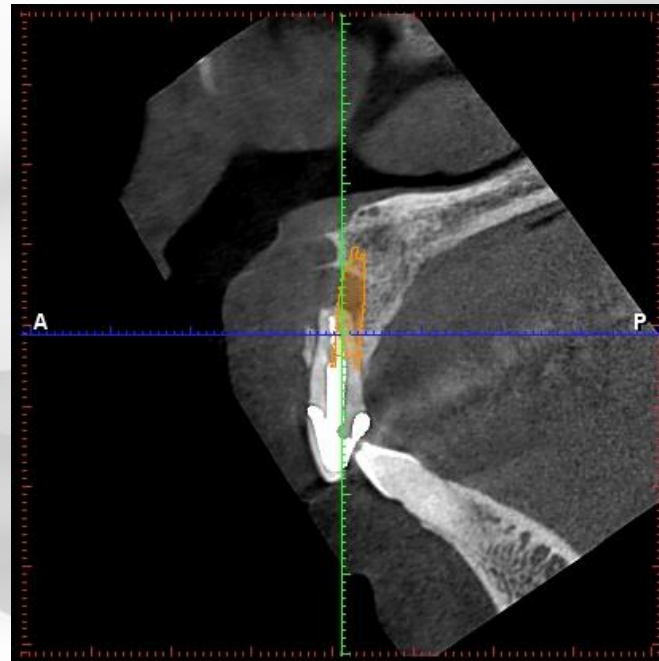
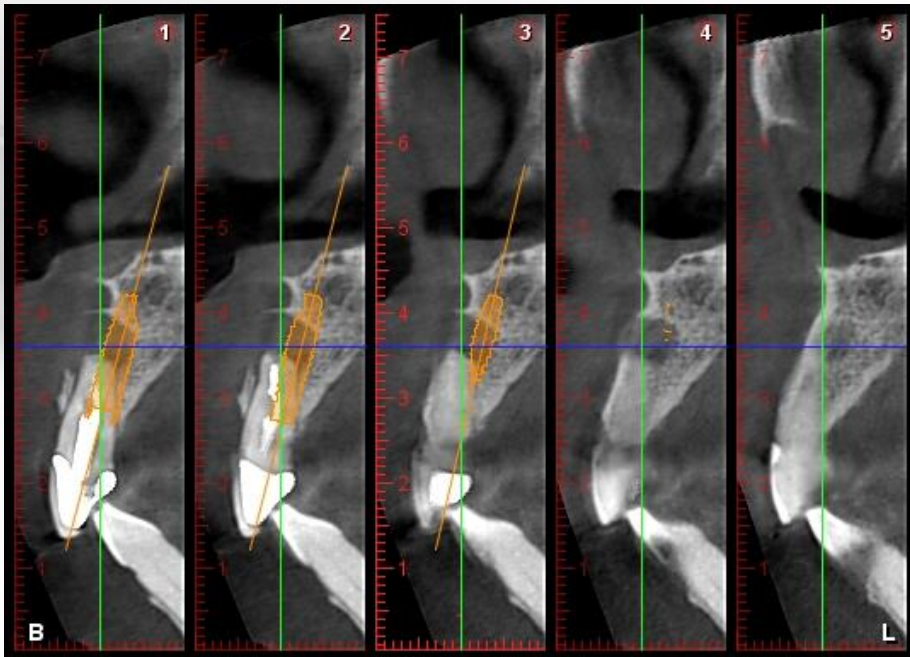
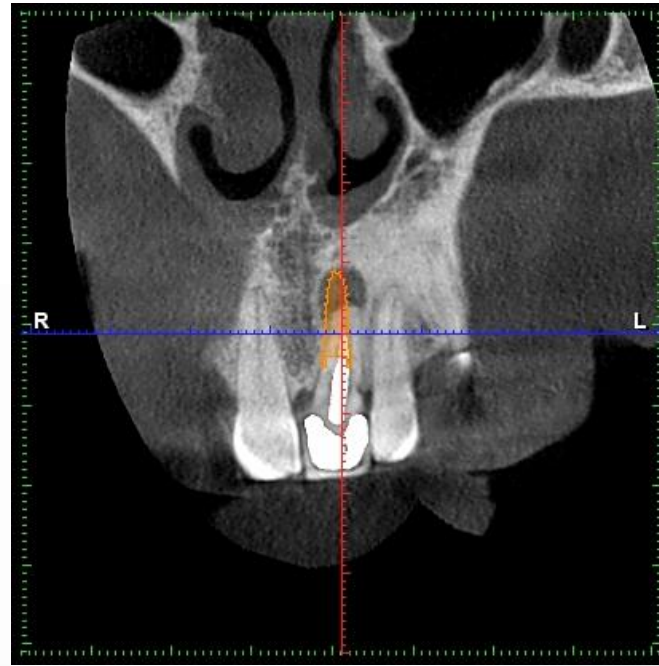
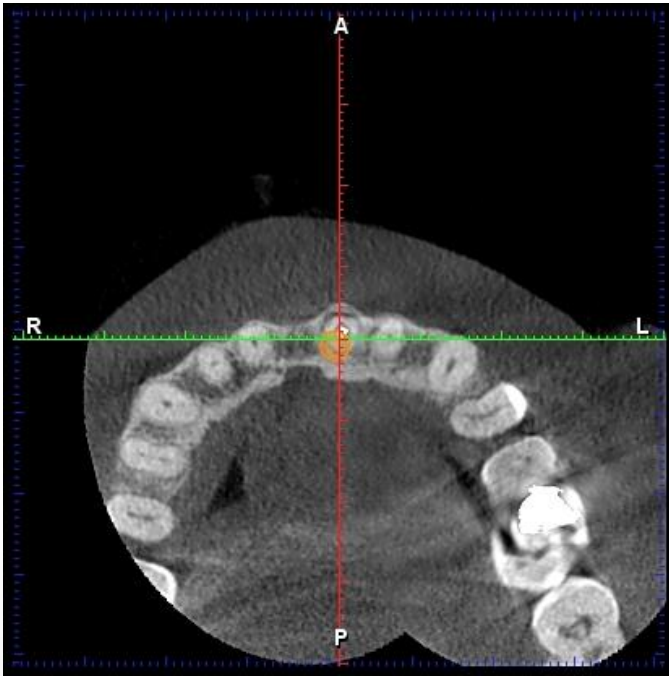


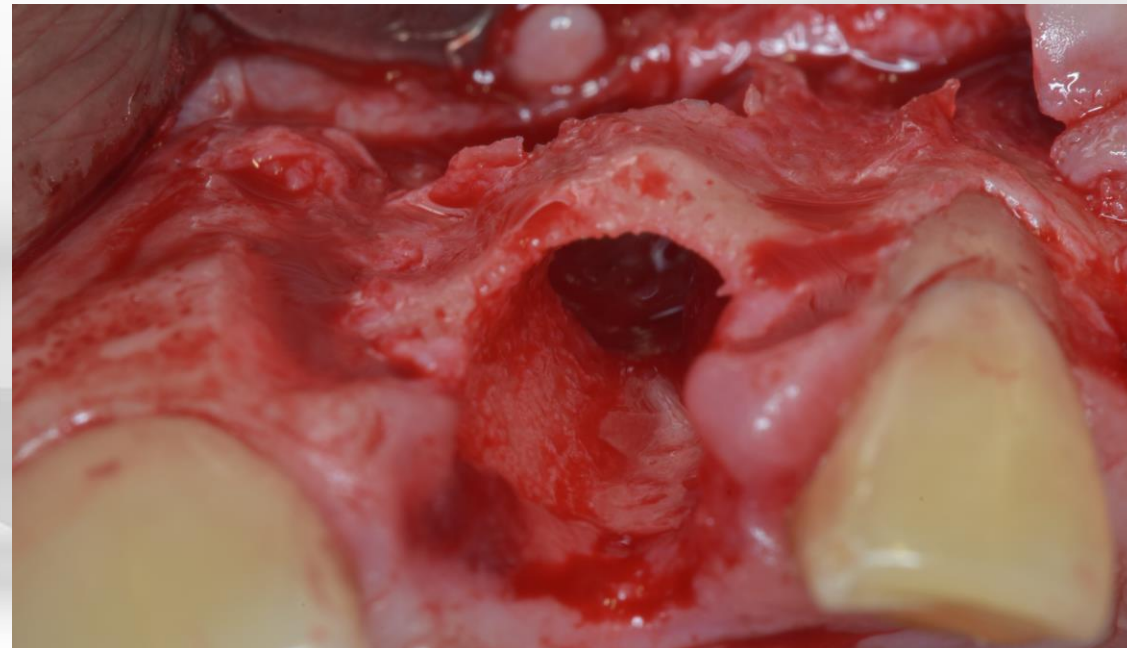
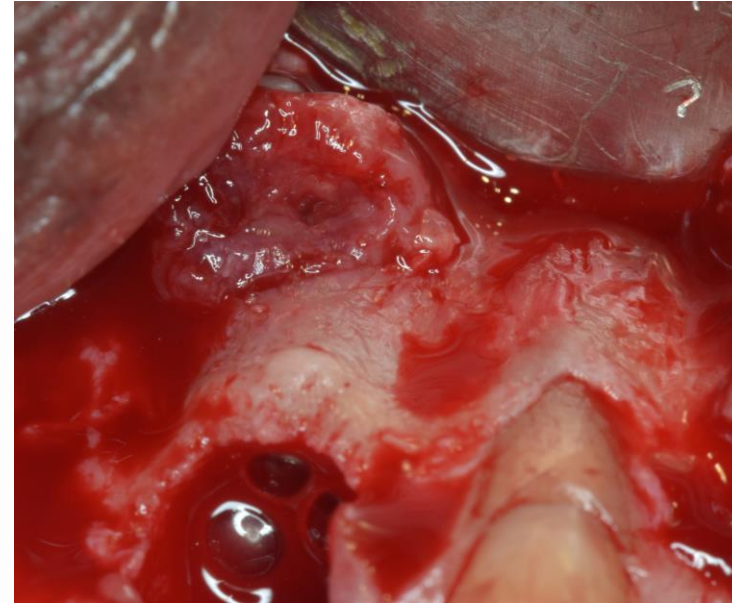
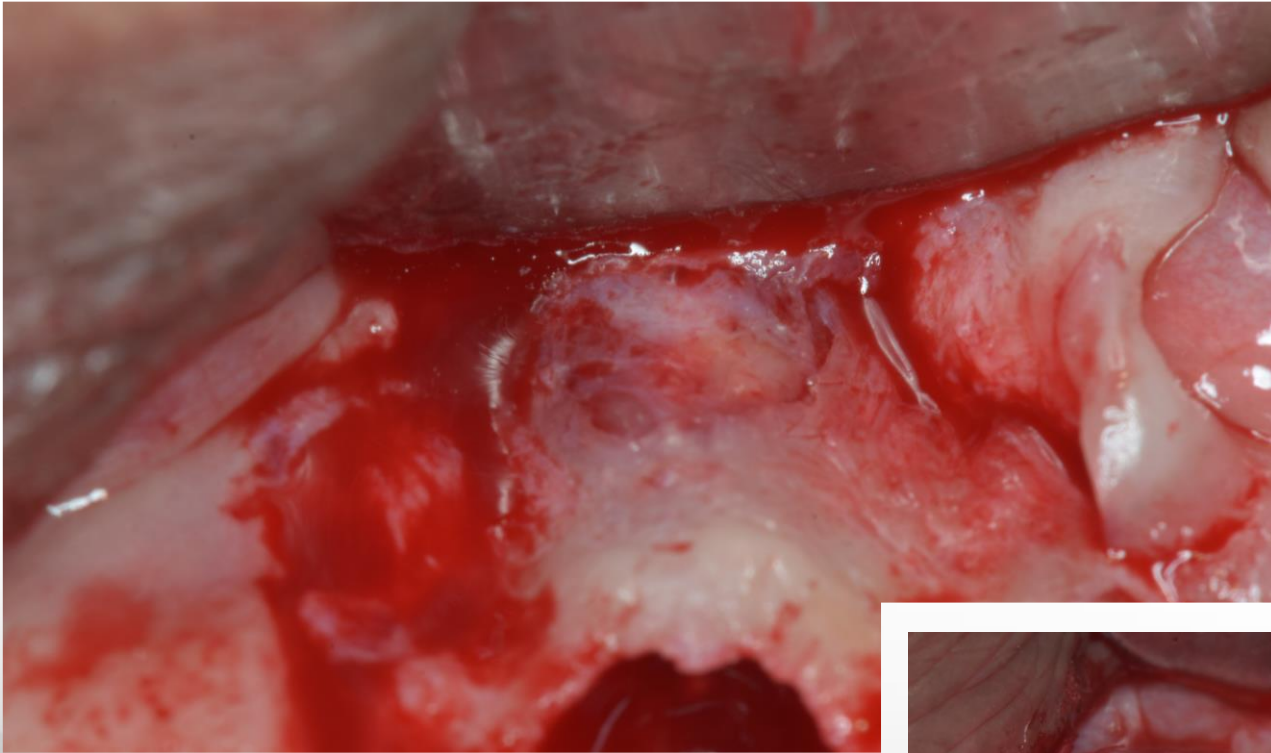
MAINTIEN DE L'OS EXISTANT

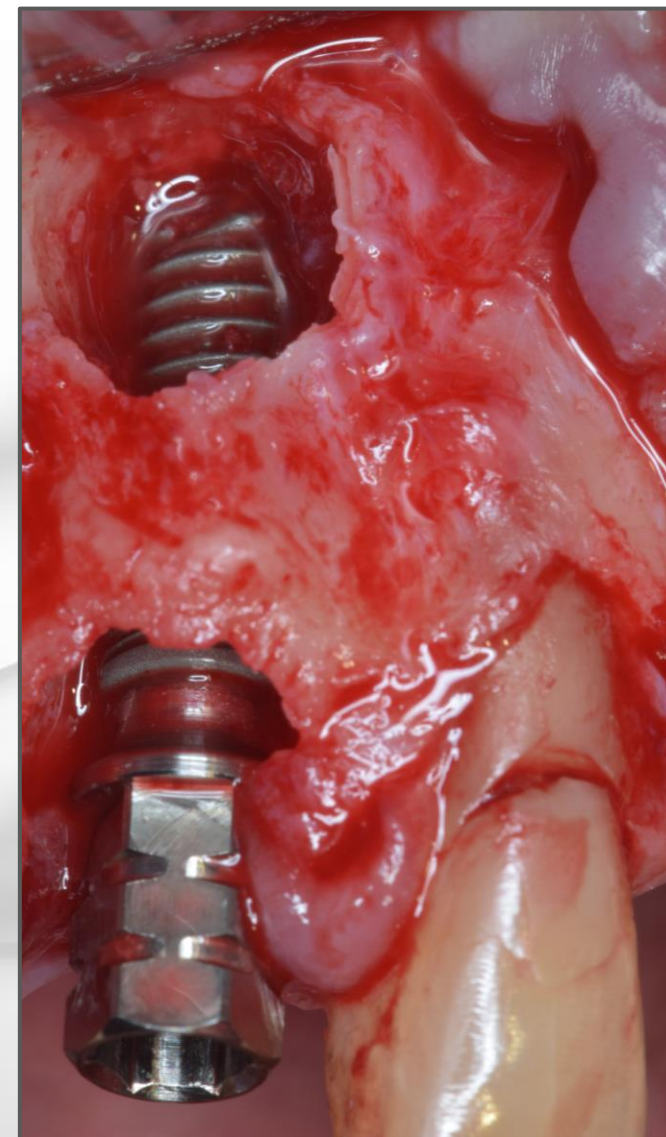
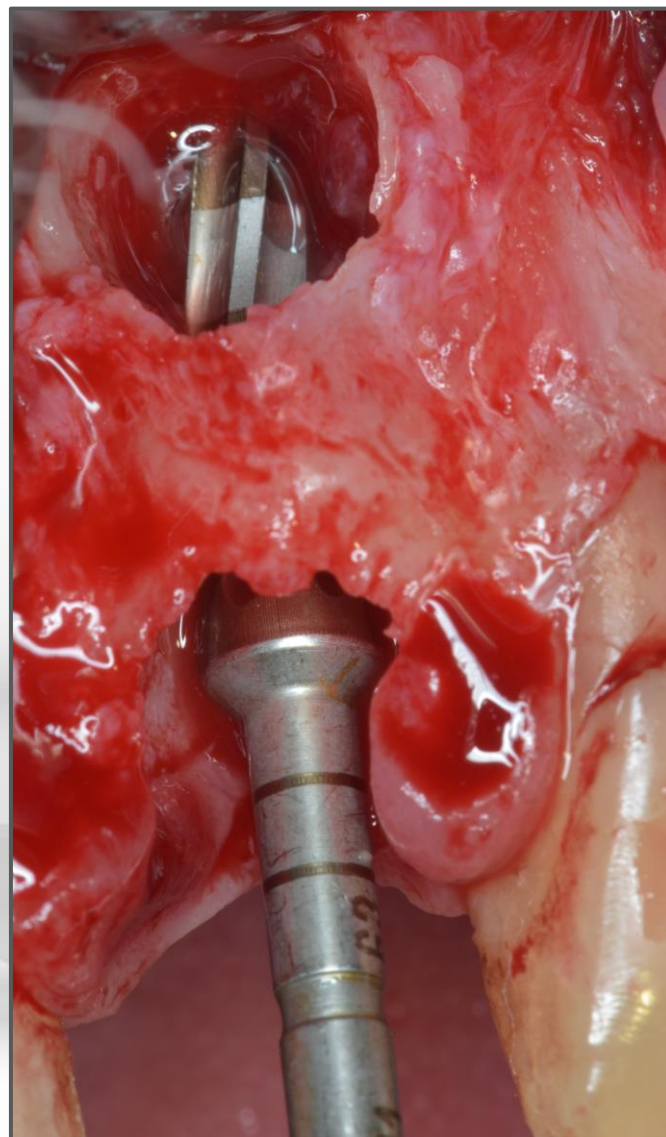
Pose os natif greffe de maintien



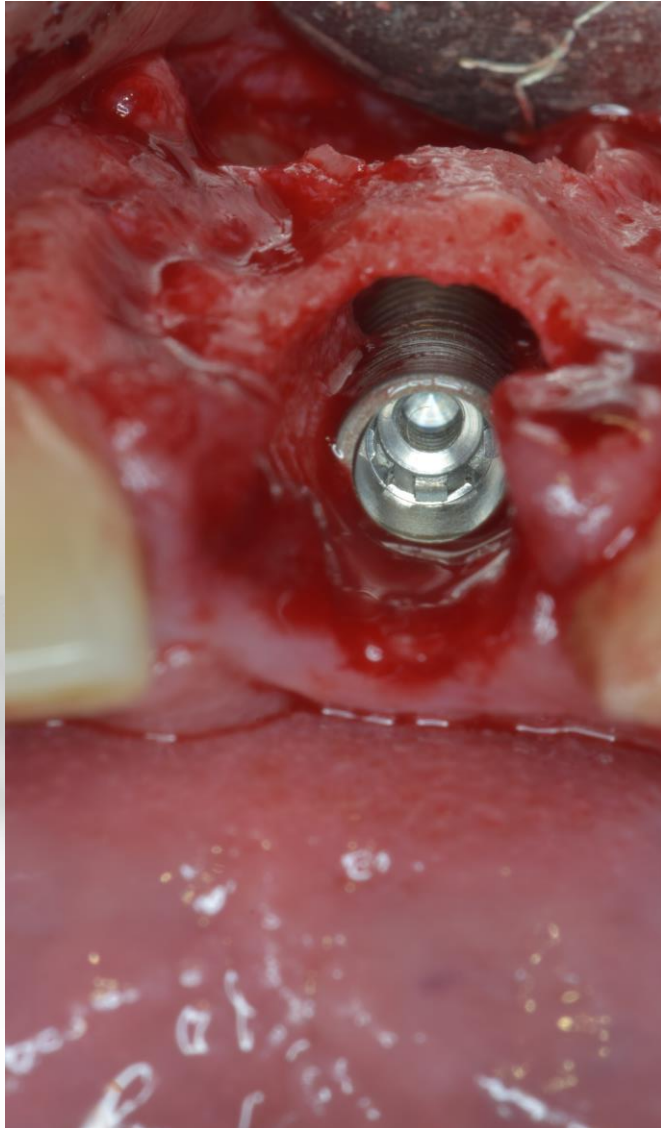
E.I.I.

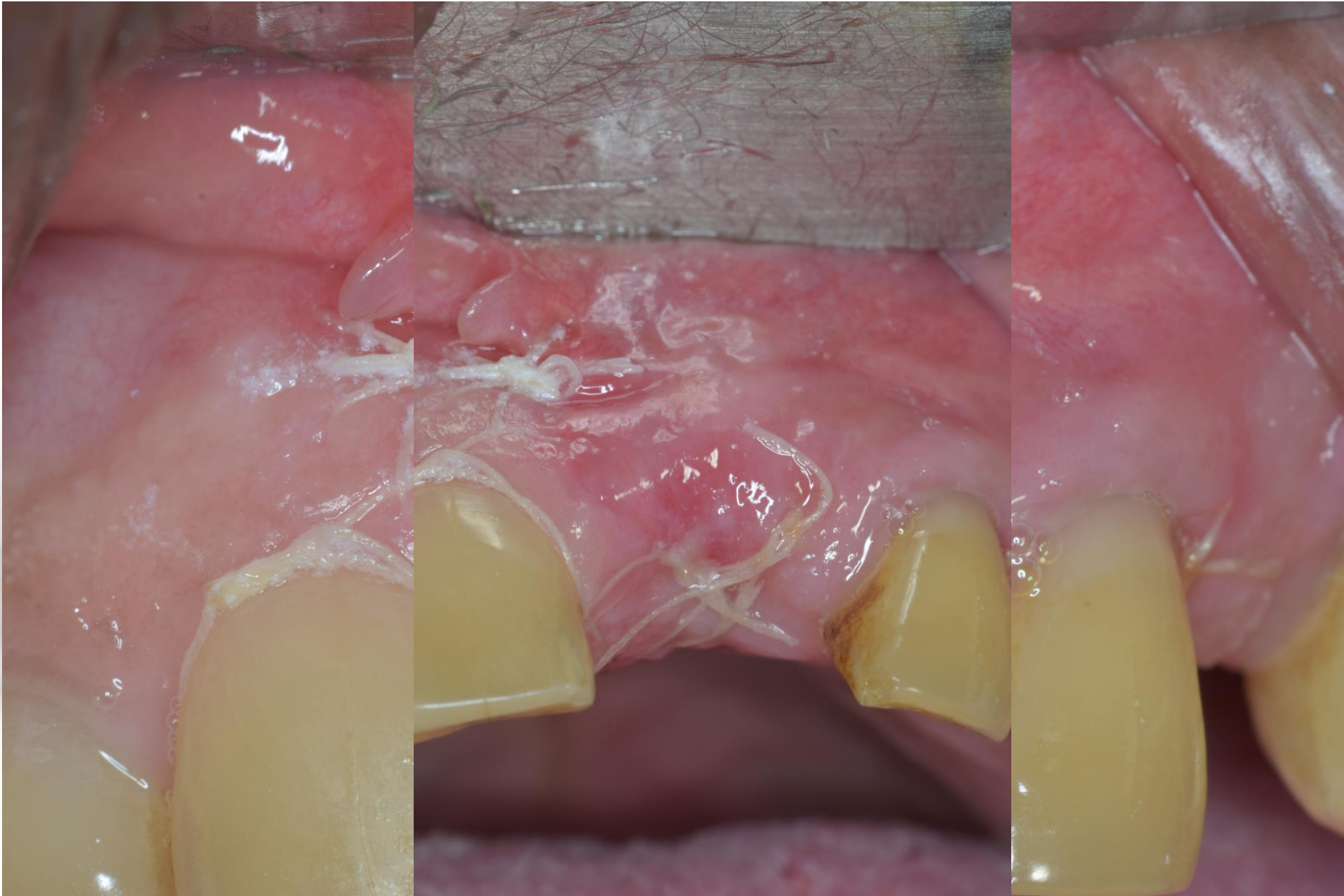




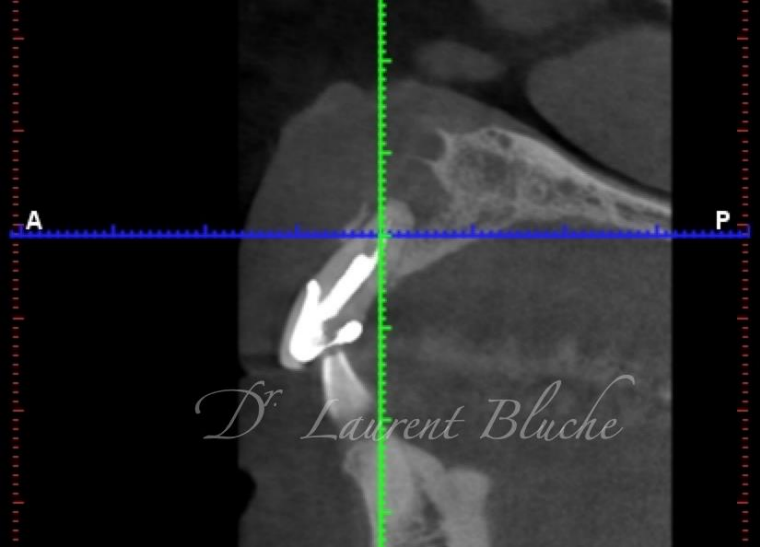


B-TCP Iceberg GMI





+ 6 mois



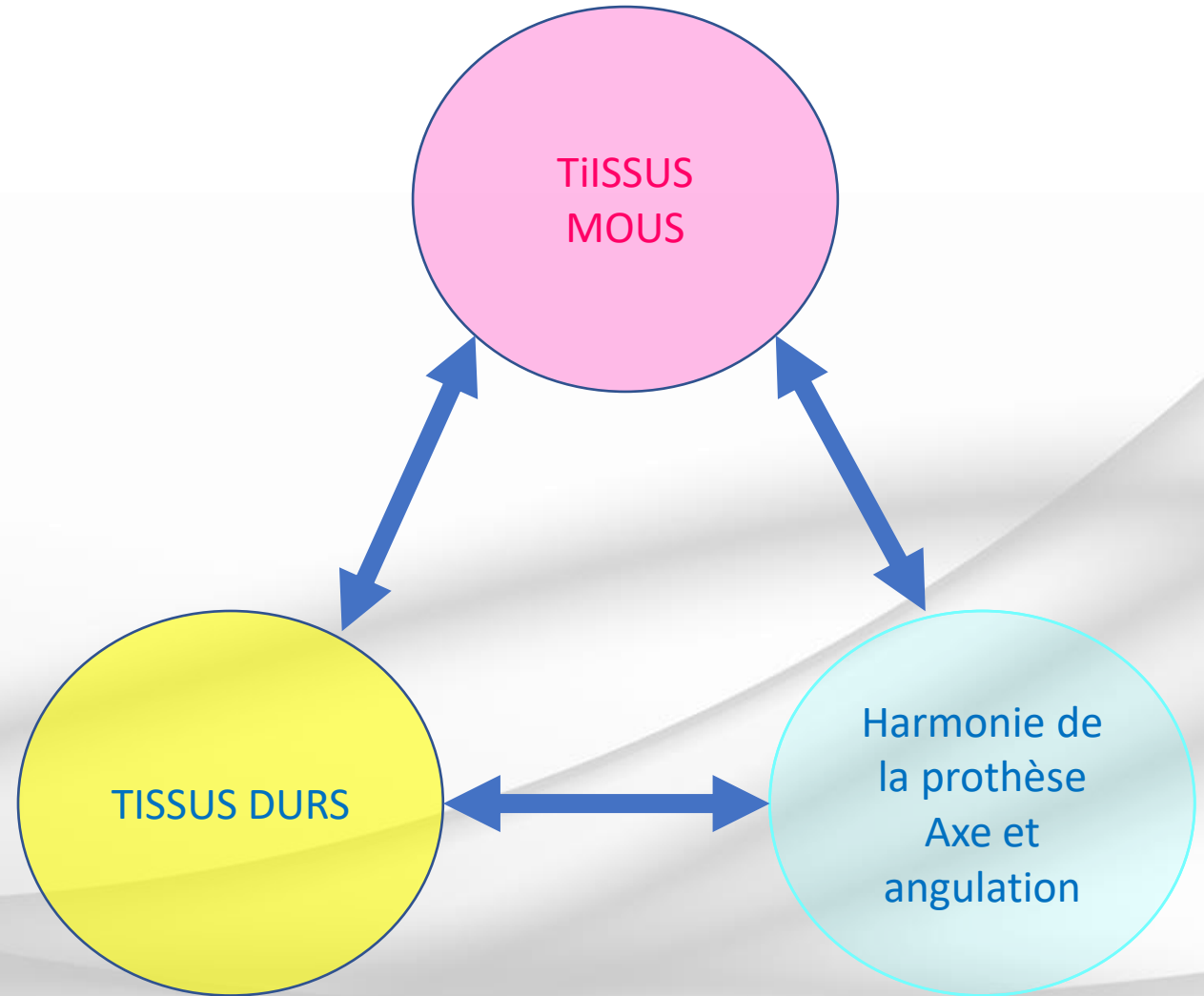
S.S.A.

Dr. Gary Finelle

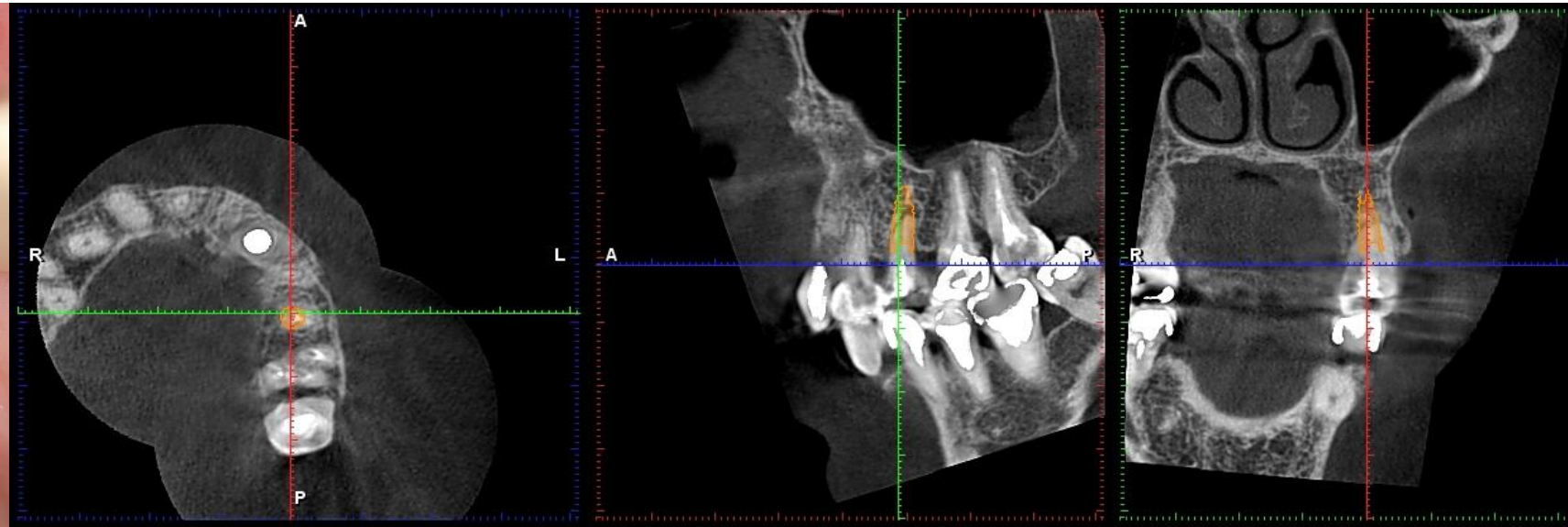
Maintien l'alvéole fermée

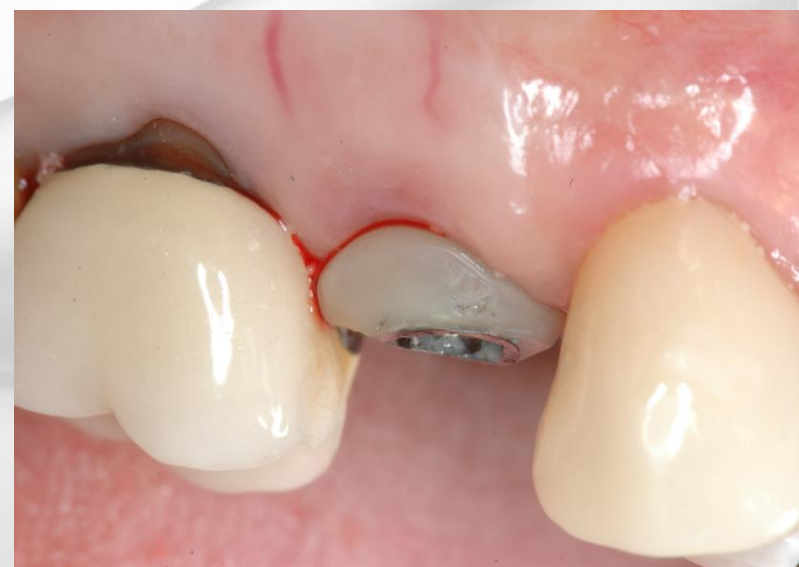
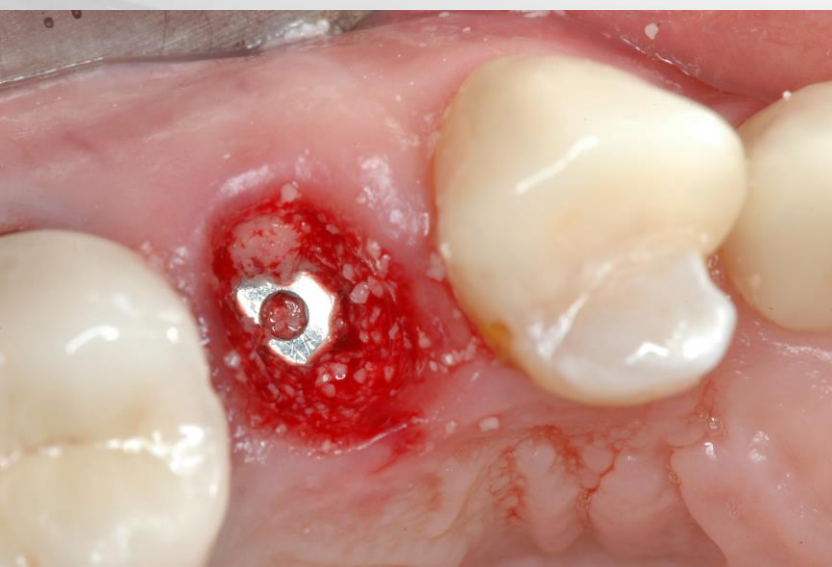
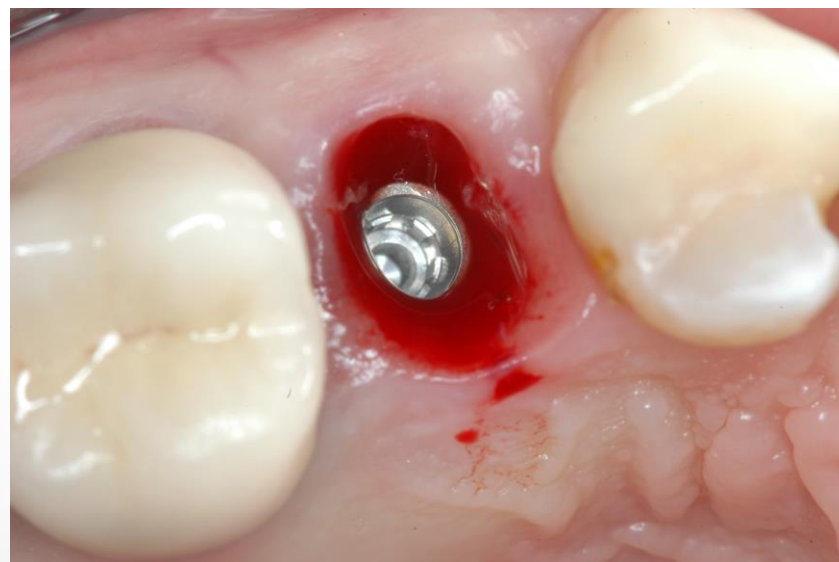
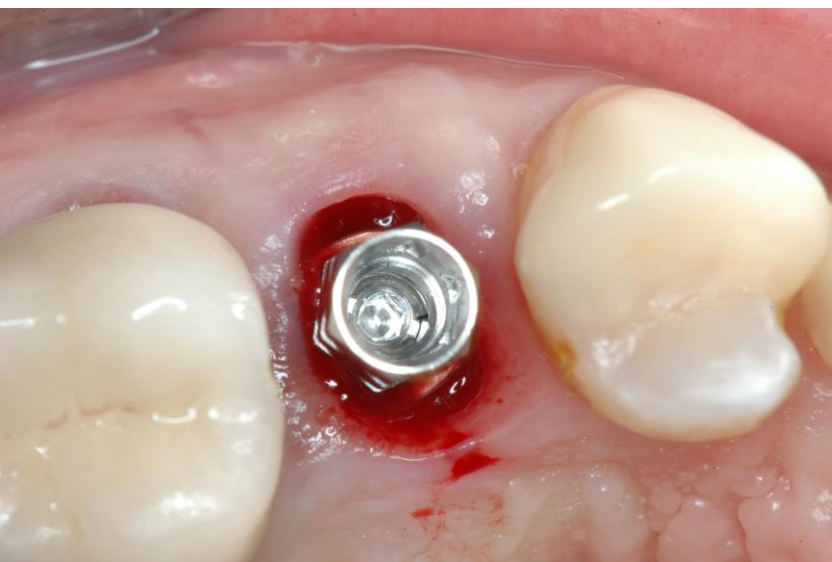
Maintien du Profil d'Emergence

Maintien des tissus mous



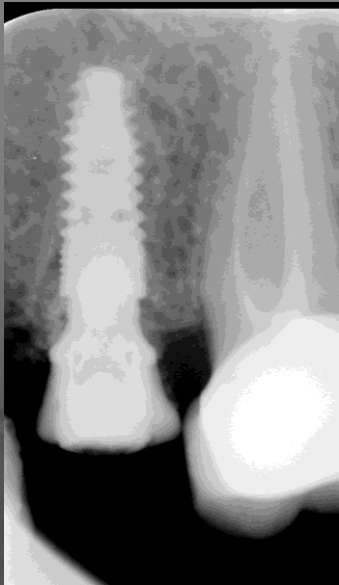
E.II.





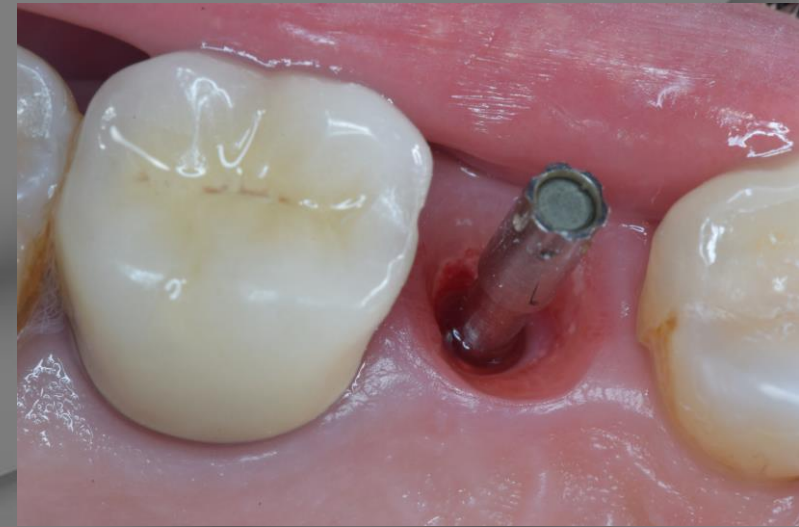
S.S.A. – SEALING SOCKET ABUTMENT

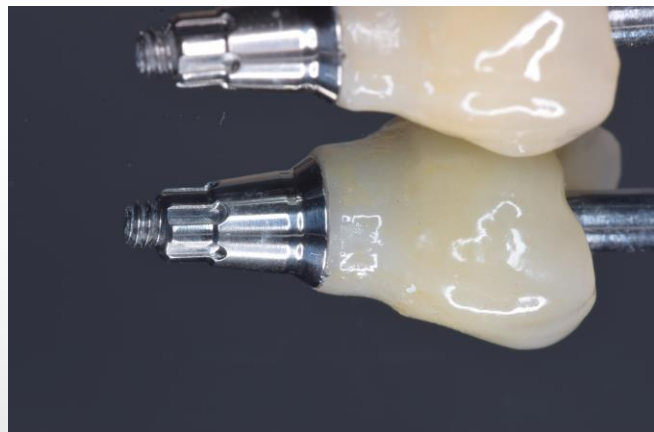
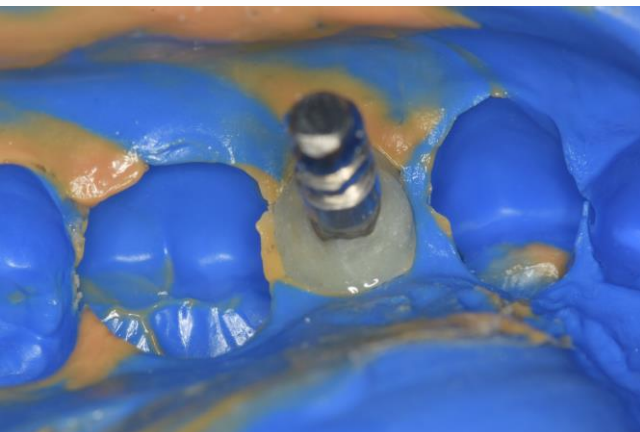
Gary
Finelle



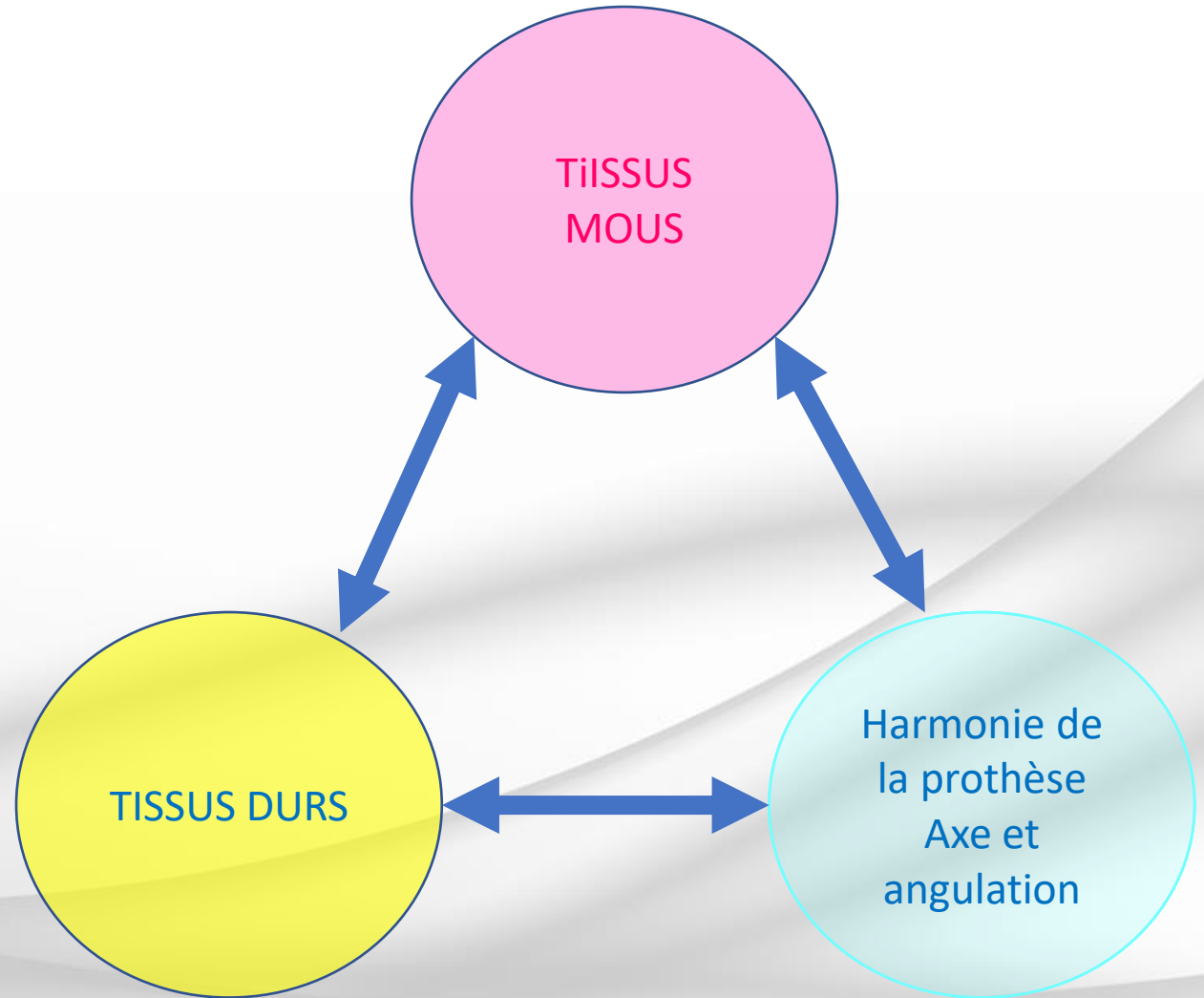
S.S.A. – SEALING SOCKET ABUTMENT

Gary
Finelle

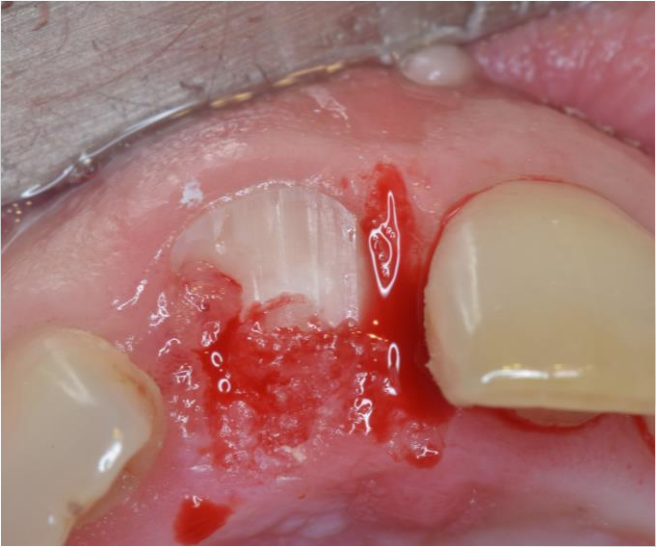
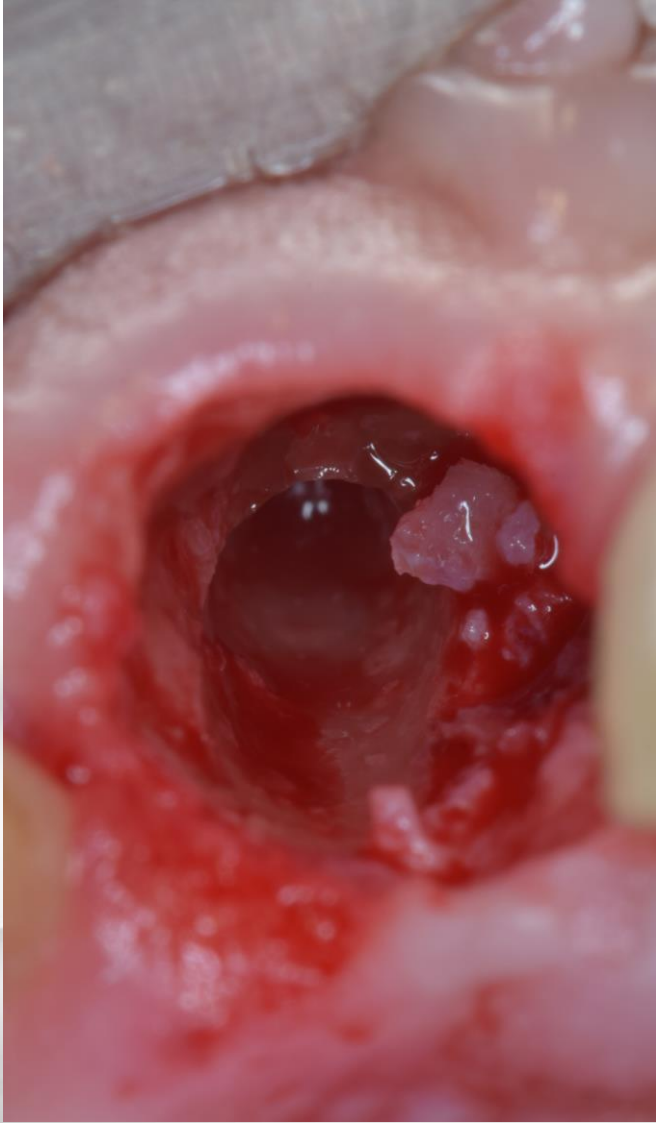




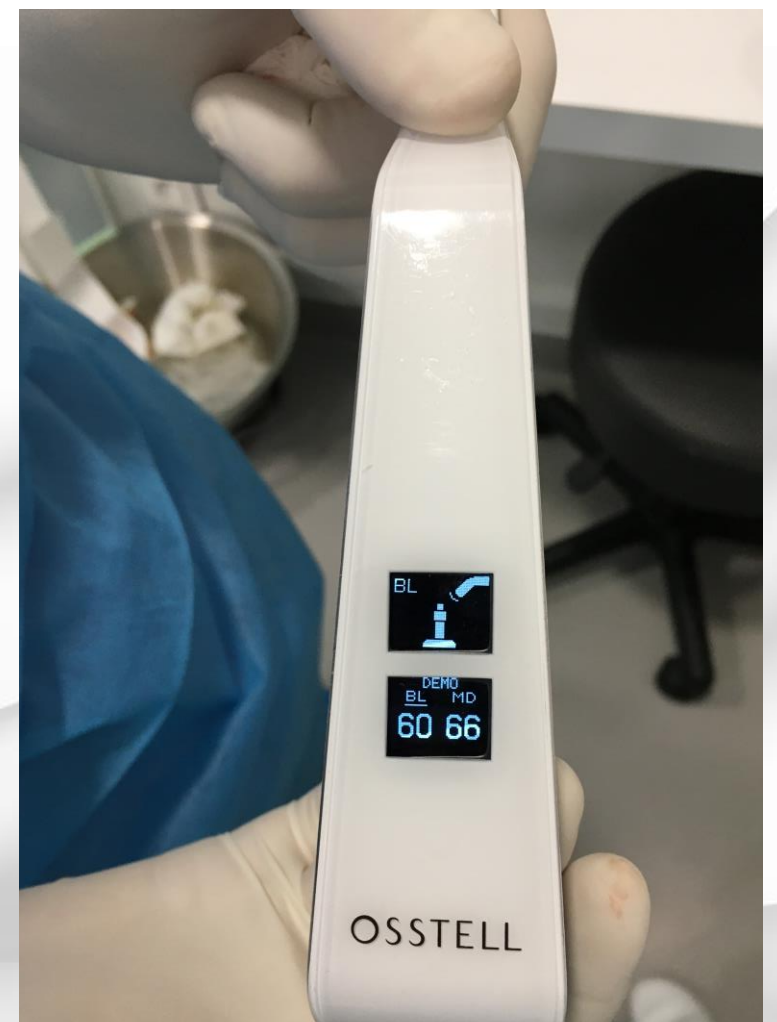
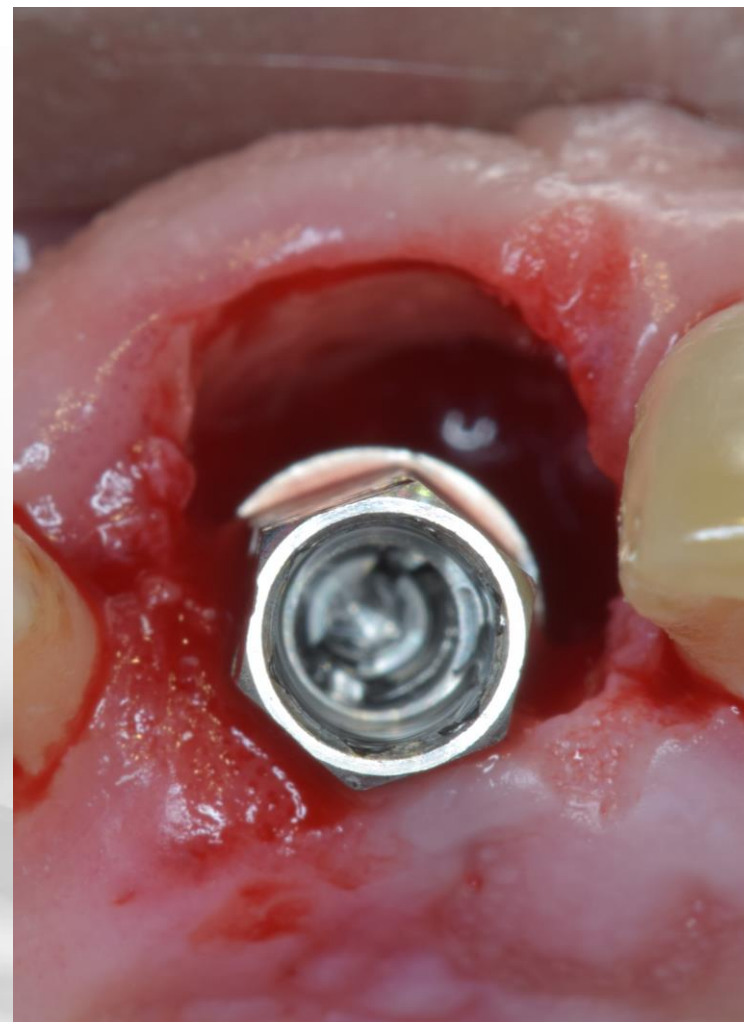
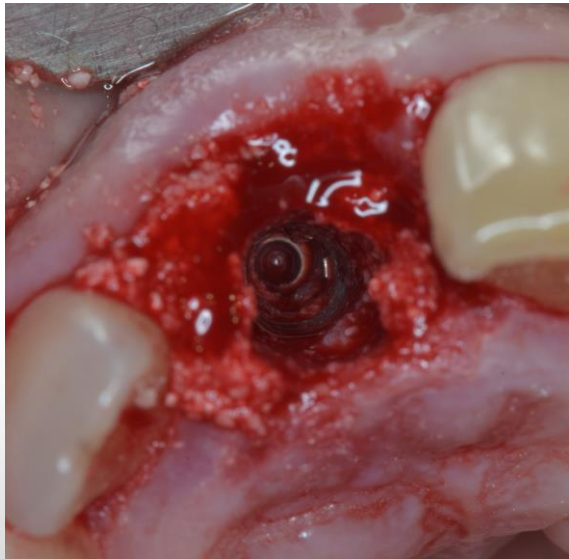
Extraction Partielle



Extraction Partielle



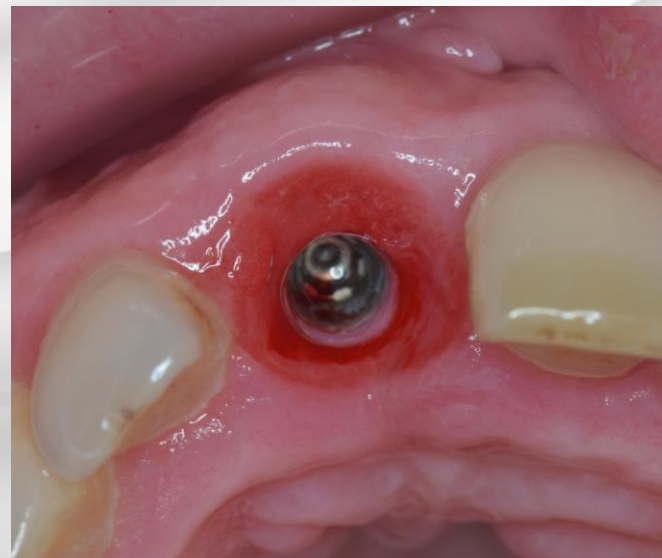
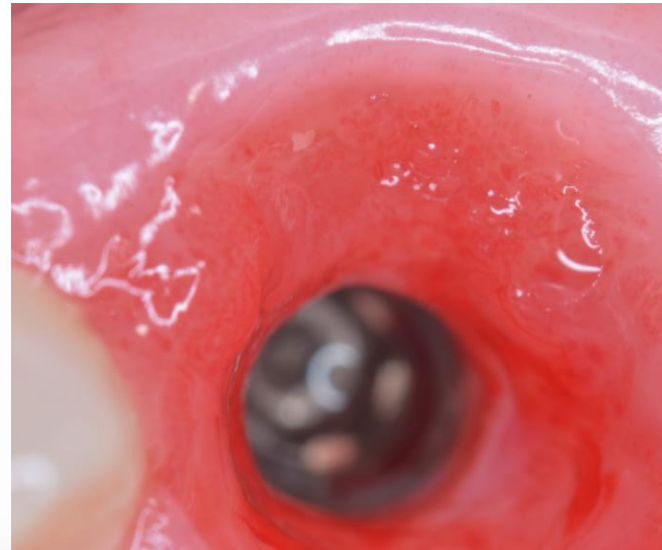
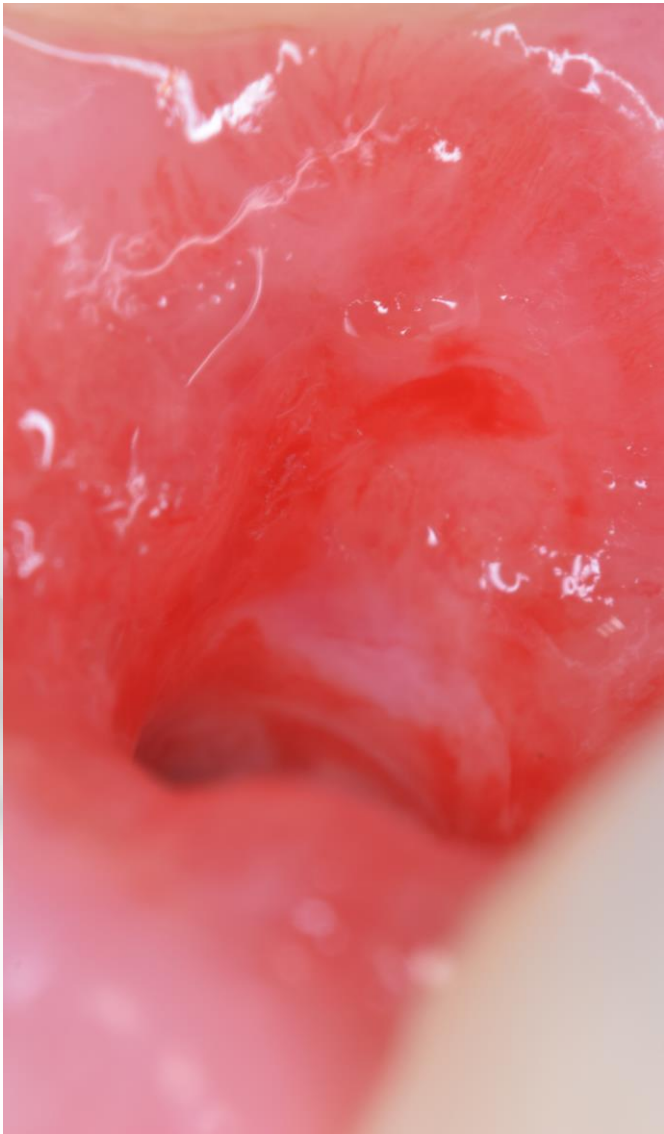
B-TCP Iceberg GMI

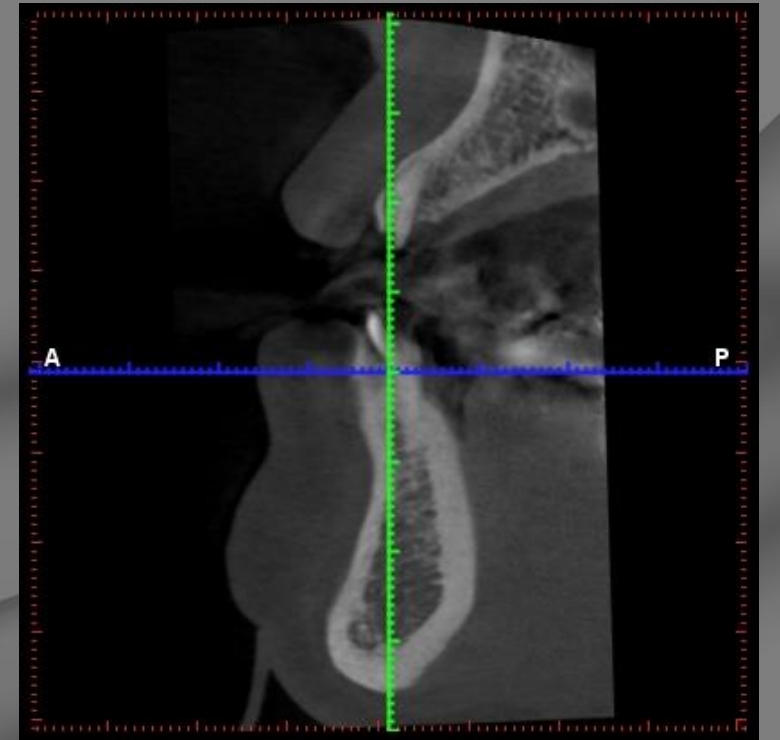
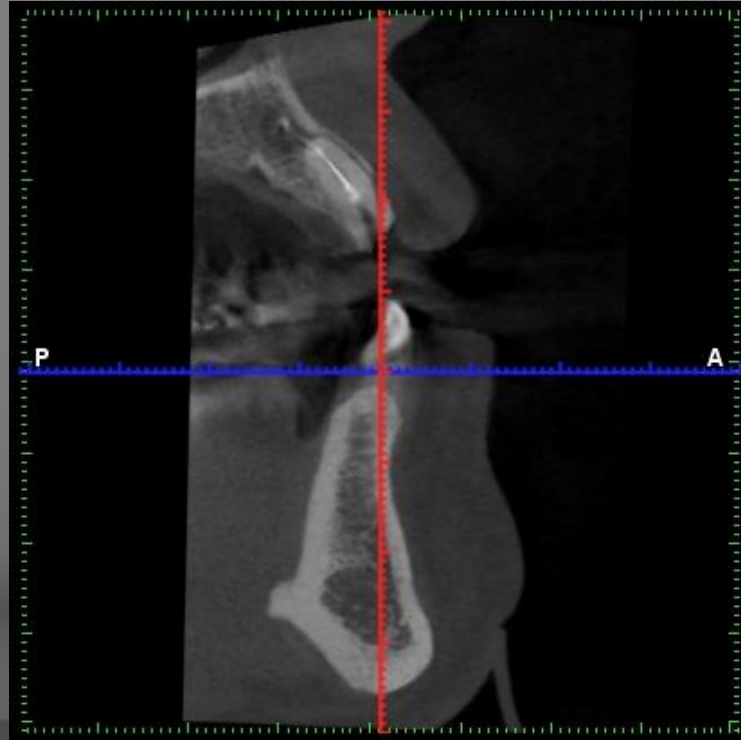
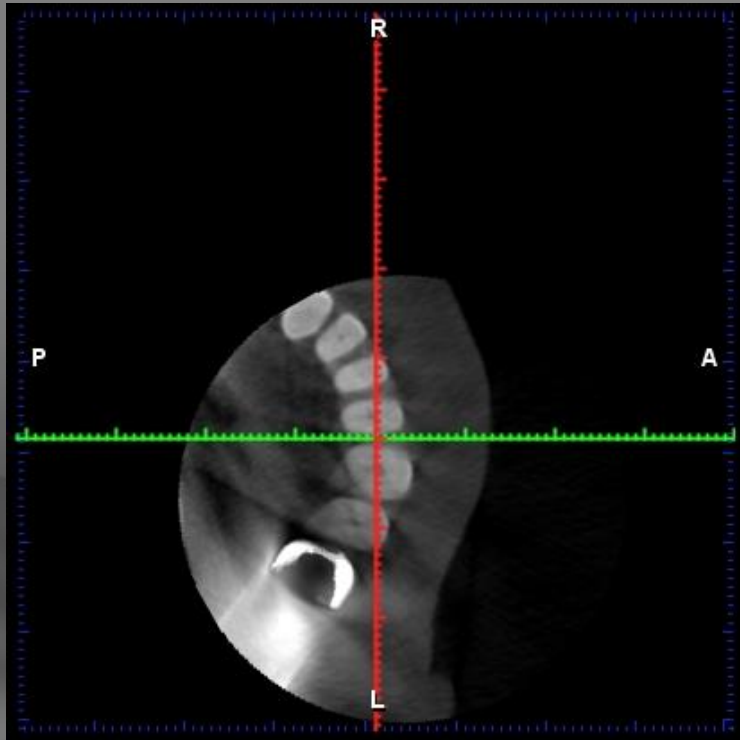


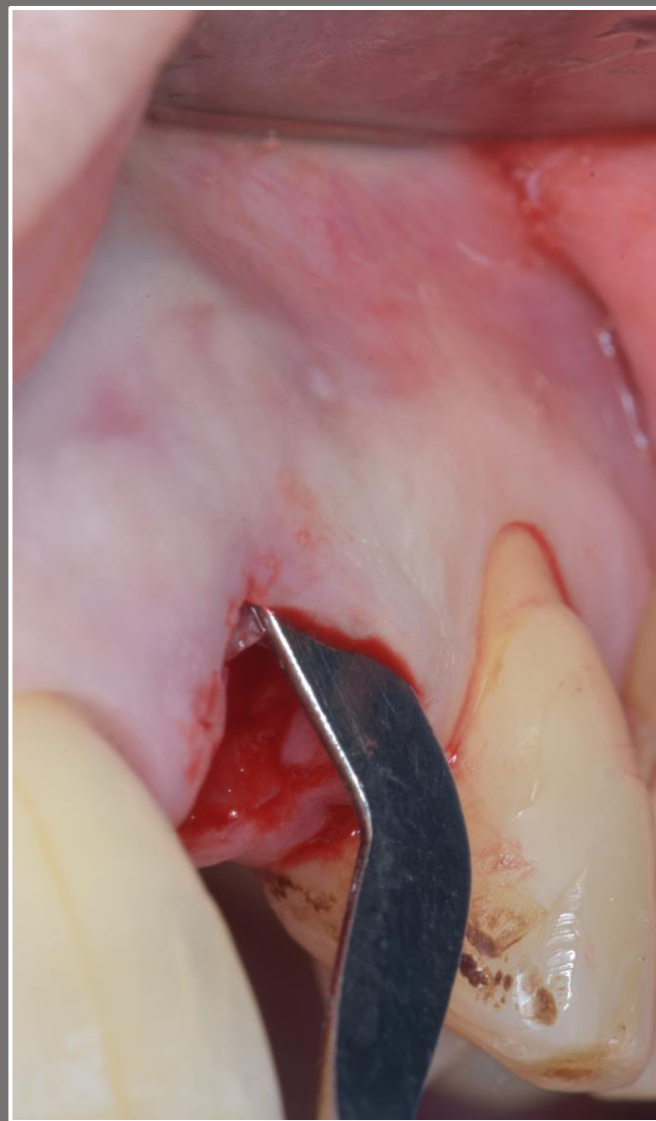
Béance antérieure sinon pas de provisoire fixée



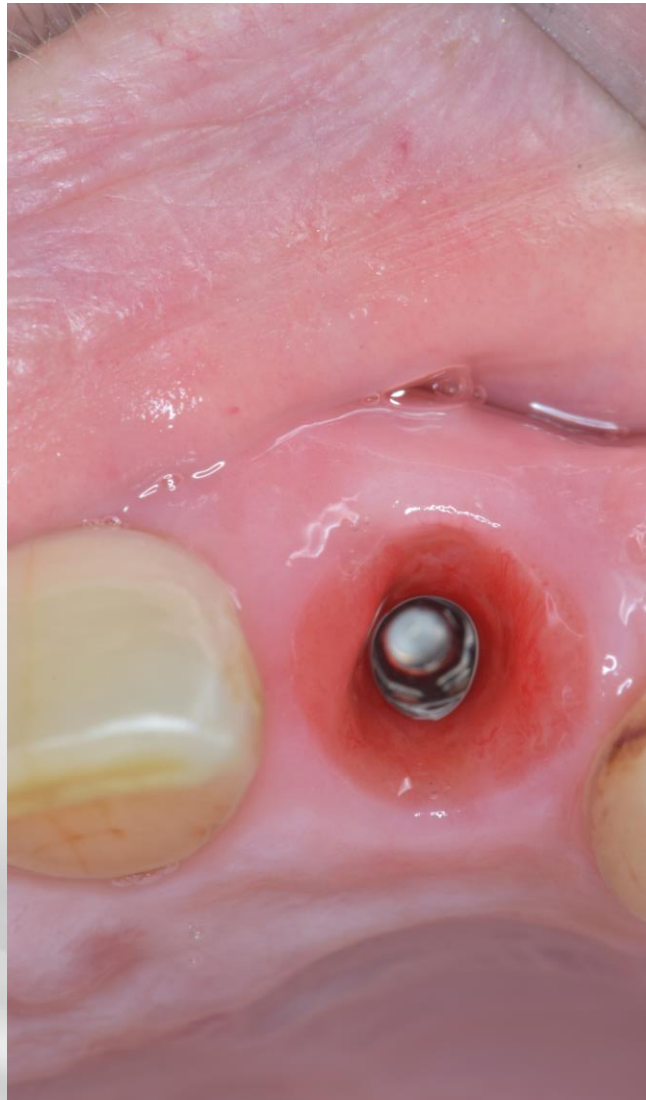
+ 6 mois

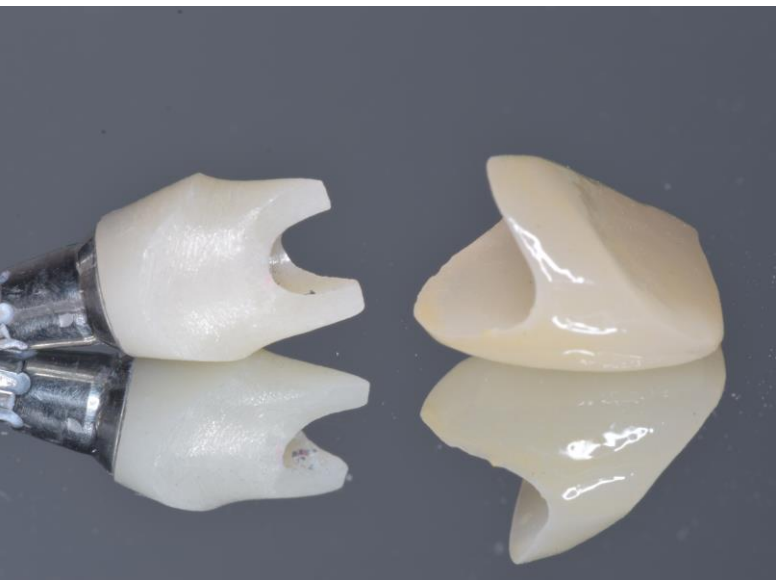








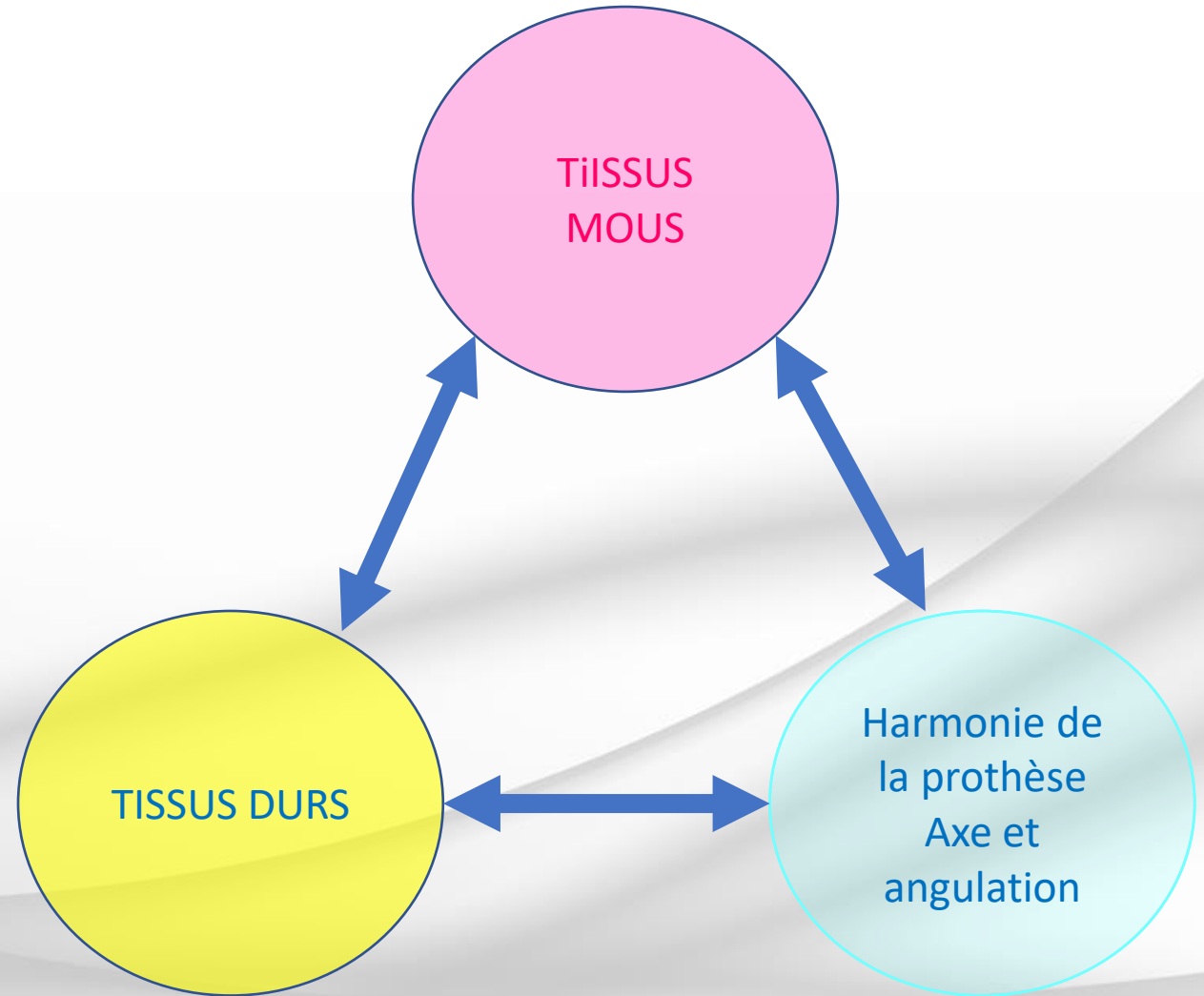




Harmonie de la prothèse. Axe et angulation

Conclusión
E.I.I. secteur antérieur

Equilibre



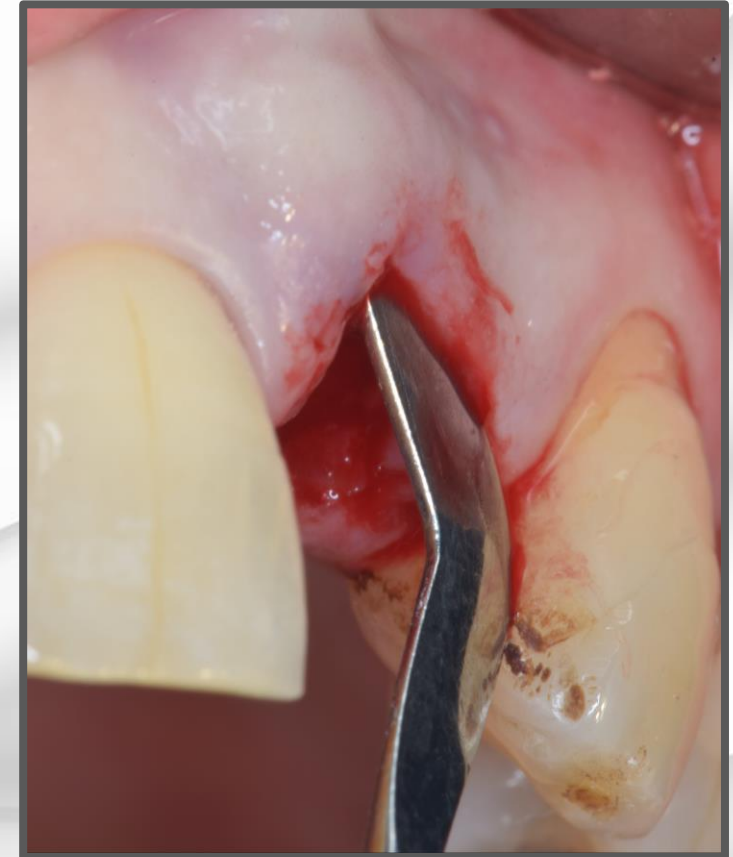
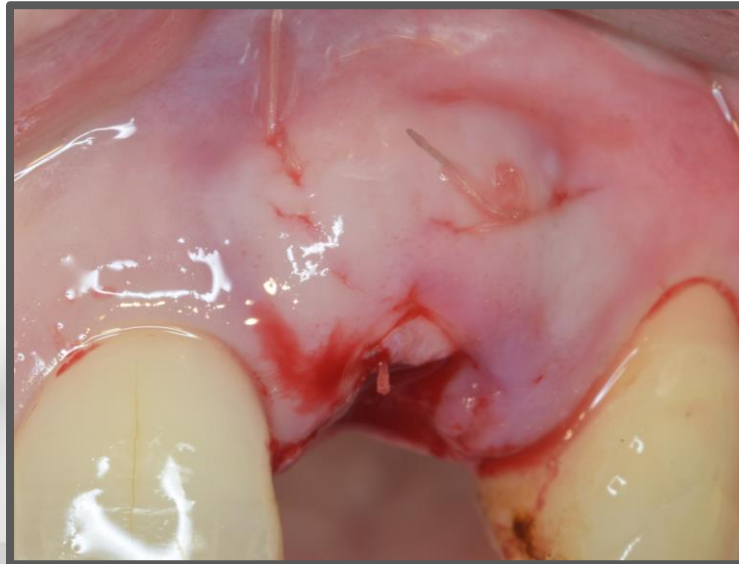
TISSUS DURS

- Maintenus par l'E.I.I
- Soutien des tissus mous
- Greffe particulaire

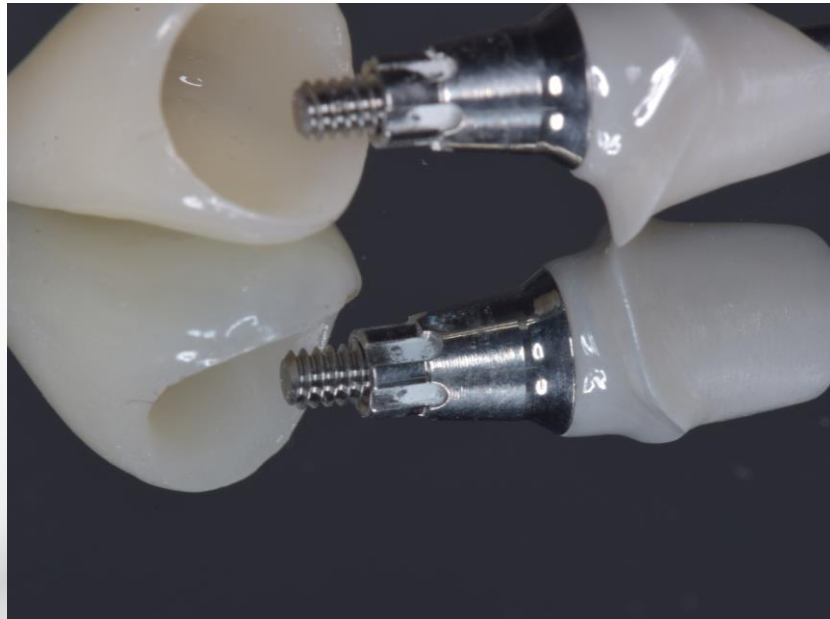


TISSUS MOUS

- Pas de fermeture de lambeau
 - SSA
 - Eponge hémostatique
- E.I.I maitien la Gencive attachée
- Greffe per-opératoire (conjectif)
- Extraction partielle



Dépend du plant de TT prothétique



Harmonie de la prothèse. Axe et angulation

E.I.I SECTEUR ANTERIEUR LES CLEFS DU SUCCÈS

(Dr. Laurent Bluche)

ADF 2022



MERCI